


**HOME AND LAND FROM**

# \$709,370

**LOT 20401 MAYWOOD ROAD**

MANOR LAKES MANOR LAKES

**SAFFIRE 25 | COVE FACADE**

 HOME SIZE: 25sq | 234m<sup>2</sup>

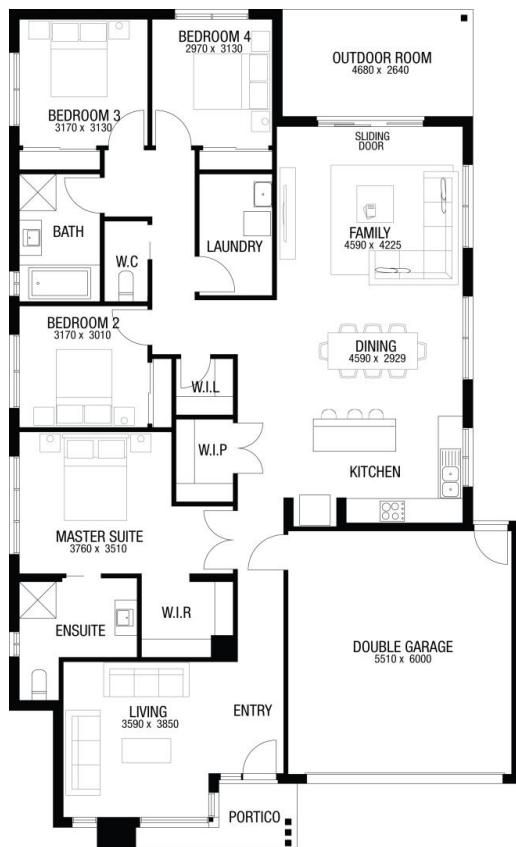
 LAND SIZE: 14m WIDE BY 28m DEEP | 392m<sup>2</sup>

FORECAST LAND TITLE REGISTRATION: JAN 2026


**BUILT TO OUR BASE SPECIFICATIONS AND LAND, PLUS:**

- ✓ 7 star energy rating
- ✓ Fixed site costs (no more to pay)
- ✓ Eaves to façade
- ✓ Quality tiles to bathrooms, ensuite and laundry
- ✓ Tiled shower base
- ✓ Stylish stainless steel appliances
- ✓ Ducted gas heating
- ✓ NBN
- ✓ Concrete paving
- ✓ 2550mm ceiling height
- ✓ Developer requirements
- ✓ Bushfire Upgrades

Price excludes upgrade items above standard specification such as feature render and bricks, front entrance timber decking, front entry door, brick infills above garage, external lighting, fencing, concrete paths and driveway. Façade image may also contain items not supplied by Australian Building Company, namely landscaping and planter boxes.


**ANU AGNIHOTRI**

ANUAGNIHOTRI@ABCHOMES.COM.AU

0478180332

