

FROM * PRICE

House & Land Package



**BUILDING
QUALITY HOMES
SINCE 1949**

GET UP TO
\$45,800*
WORTH OF INCLUSIONS
FOR JUST \$15,000*

STRUCTURAL
LIFETIME
GUARANTEE

FIELDSTONE 13_129 | METRO RANGE

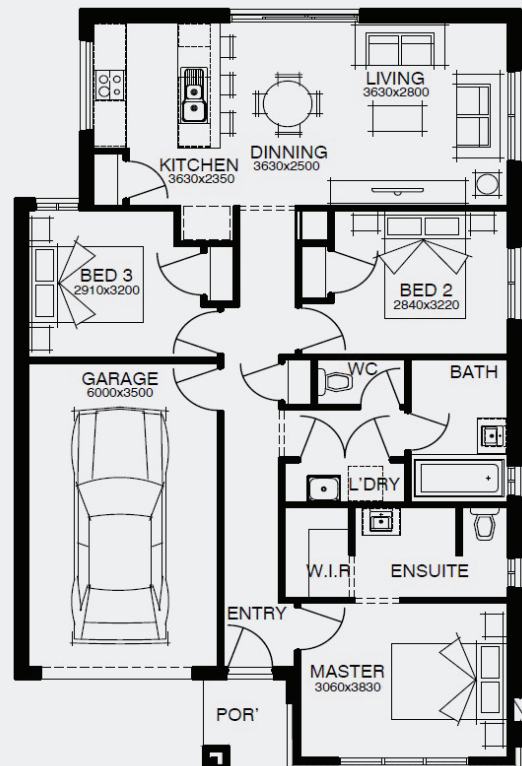
\$529,408*

FIRST HOME OWNERS - \$519,408

INCLUSIONS

- + Fixed price site costs
- + Floor coverings to entire house
- + Coloured concrete driveway & path
- + Euro stainless steel cooktop & oven
- + Tiled skirting to bathrooms
- + Ducted heating
- + R2.5 insulations batts to ceiling & sisalation to walls
- + Estate covenants & so much more!

Lot 20120, Wyndham Vale
Manor Lakes - The



THE VILLAGE
AT MANOR LAKES

For enquiries please contact: **Jesse Cicala - XXX**

simonds.com.au

Images shown are for illustrative purposes only and may not represent the final product such as lighting, window furnishings, timber look garage door & timber windows. Façade details including entry door and window sizing may vary between house types. Pricing also excludes features such as fencing, landscaping, letterbox, decking, driveway and any notable features of the façade. Please speak with your sales consultant for further details. All Fixed Price Home and Land packages are subject to Developer and Council approval and is based on Simonds standard floor plan with preferred siting (without alterations). Package Price does not include stamp duty, government, legal or bank charges. Community Infrastructure Levy and Asset Protection Permit are not included in pricing and is to be arranged by the client directly with the Developer (if applicable). Any alterations may incur additional charges. Confirm land price and availability prior to purchase. Simonds reserves the right to withdraw or amend pricing, inclusions and promotion at any time without notice. Please refer to the terms and conditions at www.simonds.com.au/terms-and-conditions. This package applies to VIC Range range only. Please speak with your sales consultant for further details. Pricing is current at 24/01/2024.

