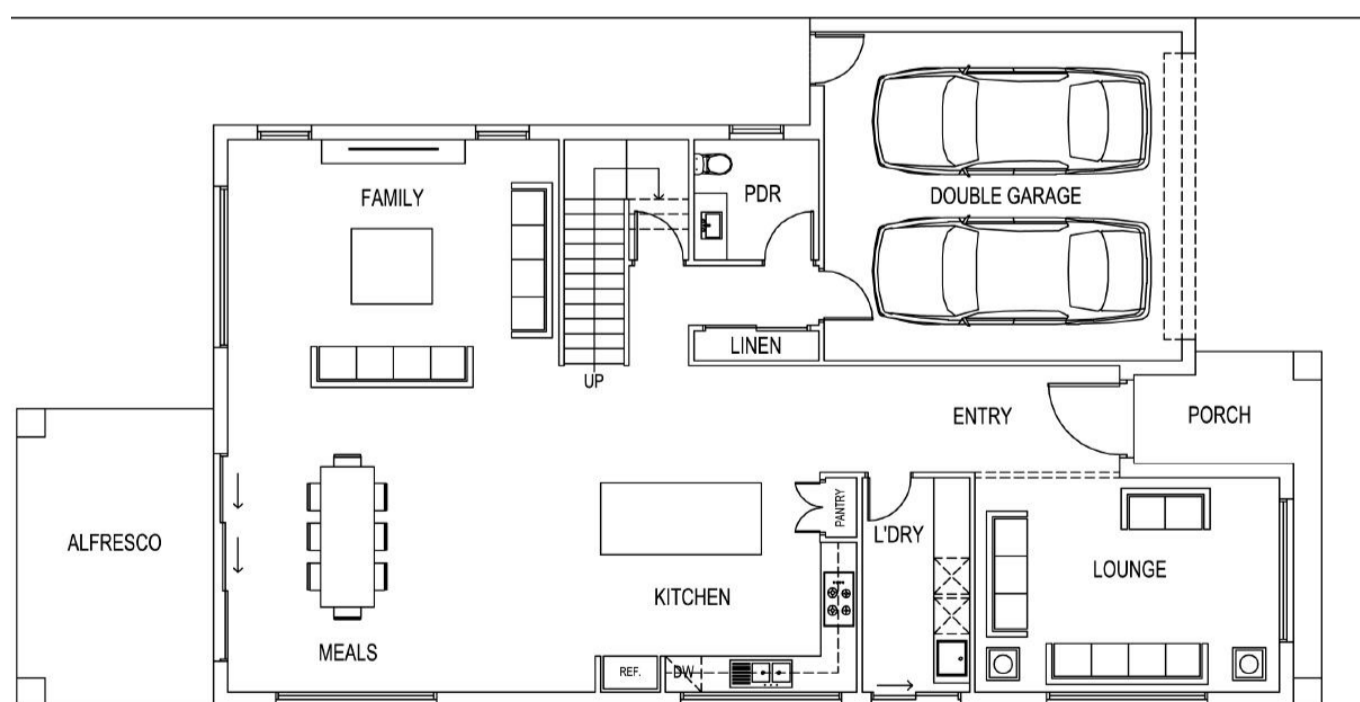
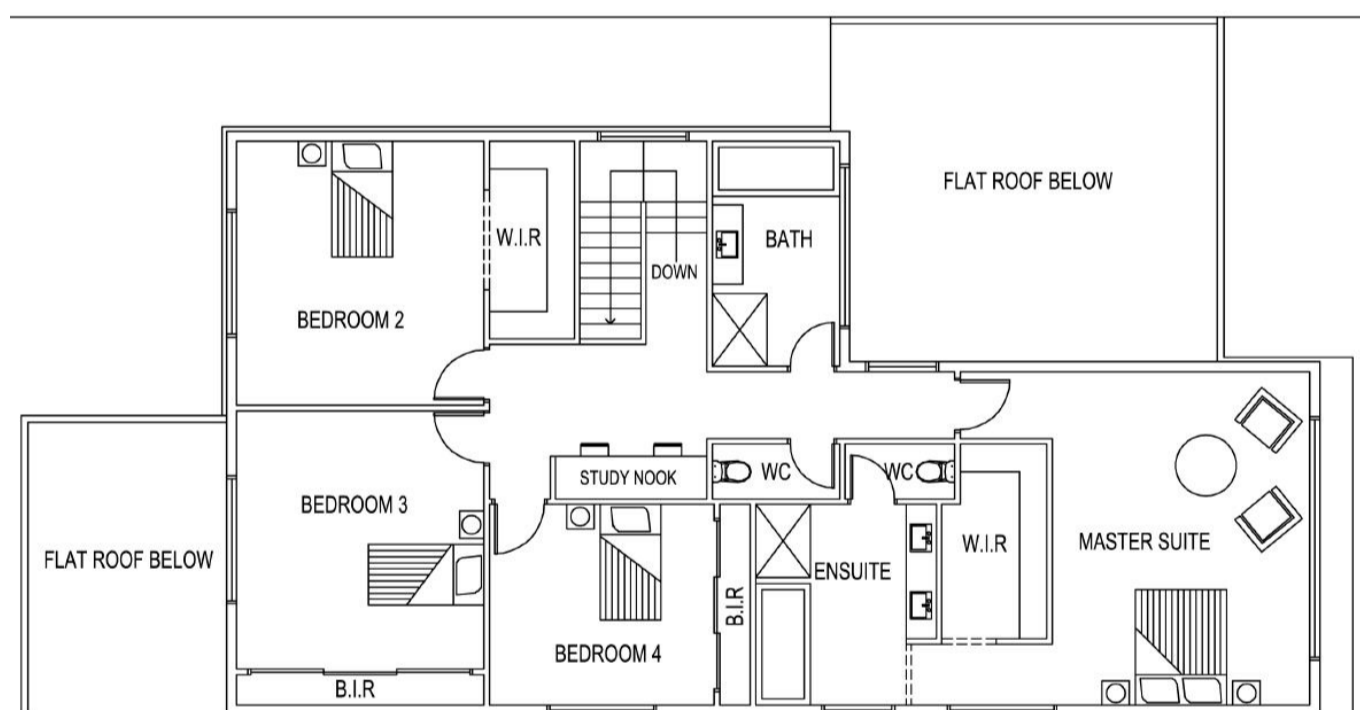




# TAHLIA 37

LOT 19711 (37SQ) (593M2) 17 LYNWOOD STREET

 4  2  2 FROM \$1.066.000



- COUNCIL & DEVELOPER REQUIREMENTS
- COLOURBOND SECTIONAL GARAGE DOOR
- OVERHEAD CUPBOARDS TO KITCHEN
- DOWNLIGHTS TO ENTRY & LIVING AREAS
- 7 STAR ENERGY RATING
- 2700MM CEILING HEIGHT
- CHOICE OF INCLUDED FACADES

FOR ENQUIRIES CONTACT:

**A** 9/66 WILLANDRA DRIVE, EPPING, VIC 3076

**P** (03) 9303 9377 **M** 0434 334 404

**E** INFO@TOMBULHOMES.COM.AU **W** WWW.TOMBULHOMES.COM.AU

TERMS AND CONDITIONS: HOME AND LAND PACKAGE PRICE CORRECT AS AT TIME OF 06/05/2020. TOMBUL HOMES RESERVES THE RIGHT TO AMEND OR WITHDRAW PRICING. ALL HOME AND LAND PACKAGES ARE SUBJECT TO DEVELOPER APPROVAL. PHOTOS FOR ILLUSTRATION PURPOSES ONLY AND MAY ONLY DEPICT EXAMPLES OF UPGRADE OPTIONS AVAILABLE AT EXTRA CHARGES. FOR FURTHER INFORMATION, REFER TO SALES REPRESENTATIVE OF TOMBUL HOMES AND WORKING DRAWINGS. PACKAGE PRICE EXCLUDES FENCING, DECKING, PAVING, LANDSCAPING, EXTERNAL LIGHTING, TELEPHONE SERVICE, CUSTOMER ACCOUNT OPENING FEES, STAMP DUTY ON LAND, GOVERNMENT CHARGES, BANK CHARGES, LEGAL FEES AND CONVEYANCING COSTS AND OTHER COSTS RELATED TO THE PURCHASE OF THE LAND. SPEAK TO SALES REPRESENTATIVE FROM TOMBUL HOMES FOR FULL DETAILS OF INCLUSIONS. LAND SUPPLIED BY DEVELOPER. CUSTOMERS REQUIRED TO ENTER INTO A SEPARATE LAND CONTRACT WITH THE LAND DEVELOPER. LAND PRICES AND AVAILABILITY ARE SUBJECT TO CHANGE WITHOUT NOTICE. ALL DESIGNS ARE THE PROPERTY OF TOMBUL HOMES AND MUST NOT BE USED, REPRODUCED, COPIED, VARIED, WHOLLY OR IN PART WITHOUT WRITTEN PERMISSION FROM AN AUTHORISED TOMBUL HOMES REPRESENTATIVE. PROSPECTIVE BUYERS SHOULD OBTAIN THEIR OWN INDEPENDENT LEGAL AND FINANCIAL ADVICE. COPYRIGHT: TOMBUL HOMES PTY LTD (ACN 60132213), ABN 73 601322132, BUILDERS REGISTRATION NUMBER: CDB-U-65418.