

# HOUSE & LAND PACKAGE

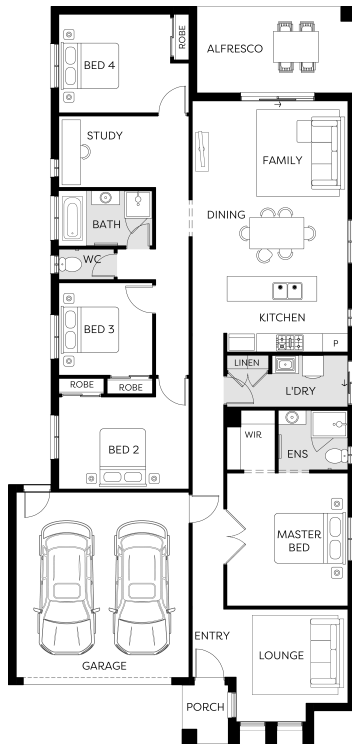


## ALIRA

LOT 20325 ARDSLEY STREET, MANOR LAKES

FIXED PRICE

# \$764,500\*



Land Size 400m<sup>2</sup>

Home Size 25SQ

### Full Turnkey Inclusions

- Fixed price site costs
- Developer and council requirements
- Coloured concrete driveway and front path
- Landscaping to front and rear, including letterbox, clothesline and fencing
- Colorbond sectional garage door
- 2590mm ceiling heights to ground floor
- Quality flooring throughout
- Reverse cycle split systems to living and bedrooms
- 40mm stone benchtops to kitchen, ensuite and bathroom
- SMEG kitchen appliances, including dishwasher
- Undermount sink to kitchen
- Floor to ceiling tiles in ensuite and bathroom
- Laundry fit out, including base cabinet
- 7 star energy rating

☎ Dane Cuthbert +61 418 693 927  
✉ danec@sohohiving.com.au  
🌐 sohohiving.com.au

Whilst care has been taken in the preparation of this flyer, the particulars are not to be construed as containing any representation of the facts upon which any interested party is entitled to rely. This flyer is intended to provide general information only and does not constitute an offer to supply. All photographs, plans, maps and drawings are illustrative only and may not be to scale. Lot layout, lot size dimensions, easements, landscape treatments and final road layout are subject to change and conditional on authority approval. All interested parties should make their own enquiries. Information contained is correct at the time of printing. \*Source: Victorian Planning Authority | CDB-U 50036

SOHO  
LIVING