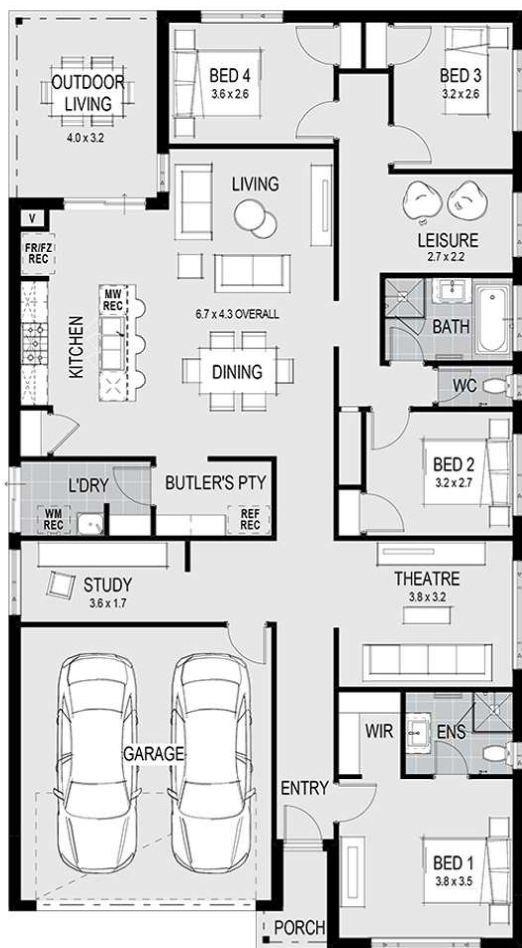




House Plan:



LOT #20321

The Village at Manor Lakes

Address: Ardsley Street, Mambourin, 3024



448 m²

Paris 25 - Melbourne - Classic

Package Price From

4 2 2 24 sq

\$733,990*

About package:

All of this included in your new home

- Category 1 facade
- Timber laminate flooring & loop pile carpet
- Stone benchtops to kitchen, ensuite and bathroom
- European Design flickmixer tapware
- Rain head showers
- Semi framed shower screens
- Tiled shower bases
- Lever Door Handles
- Double Lock Up Garage with remote control door
- Gas ducted heating throughout
- Fixed site costs

Classic Kitchen Inclusions

- Huge 1200mm Wide Island Bench with breakfast bar
- Stone Benchtops
- European High Gloss Cabinetry
- Extensive Drawers
- 900mm Westinghouse Freestanding Stove
- 900mm Westinghouse Canopy Rangehood
- Microwave recess with pot drawer
- European style designer 1 & 3/4 bowl stainless steel sink
- Dishwasher recess
- Pull out bin
- Soft closing doors & drawers

ENQUIRE NOW:

Bav Singh • P: 0494 165 500 • E: bav.singh@homegroup.com.au

Group

*All Images and plans depicted are for illustrative purposes only and are subject to change. This work or any part of it may not be reproduced or copied in any form without the prior written consent of Home Group. © Home Group Pty Ltd CDB-U 59667. *All Prices and specifications shown are subject to change without notice, and are subject to final confirmation upon the terms of any agreement with Home Group at the time of purchase. For full terms and conditions applicable please see www.homegroup.com.au/terms