

FROM * PRICE

House & Land Package



FIXED PRICE
GUARANTEE

SPEND \$5K & RECEIVE
\$10K
WORTH OF UPGRADES

STRUCTURAL
LIFETIME
GUARANTEE

FINCH 16 | EMERGE RANGE

\$523,323*

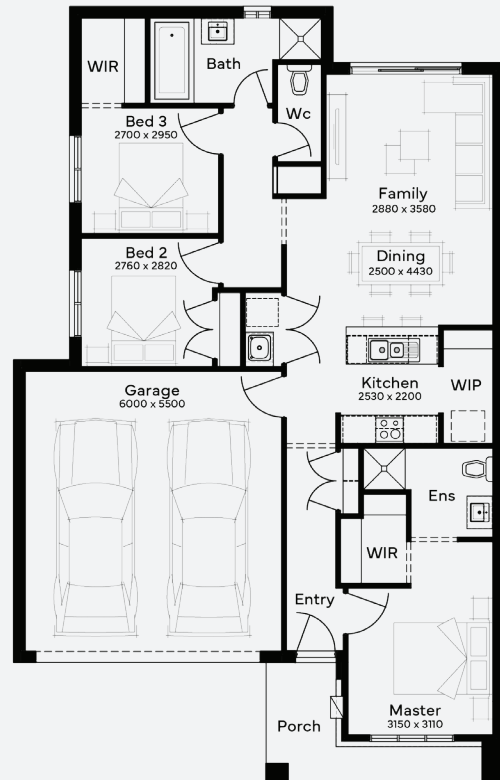
**Lot 20120, Wyndham Vale
Manor Lakes - The**



FIRST HOME OWNERS - \$513,323

INCLUSIONS

- + Generous Site Costs
- + Developer & council requirements
- + Photovoltaic panels with inverter
- + Feature front entry door
- + Colorbond Sectional garage door & remote controls
- + Floor coverings to entire house
- + 20mm Stone benchtops to kitchen
- + Quality stainless steel cooktop & oven
- + Ducted Heating
- + Plus much more!



THE VILLAGE
AT MANOR LAKES

For enquiries please contact: **Judit H-lzak - 0466 065 529**

simonds.com.au

Images shown are for illustrative purposes only and may not represent the final product such as lighting, window furnishings, timber look garage door & timber windows. Façade details including entry door and window sizing may vary between house types. Pricing also excludes features such as fencing, landscaping, letterbox, decking, driveway and any notable features of the façade. Please speak with your sales consultant for further details. All Fixed Price Home and Land packages are subject to Developer and Council approval and is based on Simonds standard floor plan with preferred siting (without alterations). Package Price does not include stamp duty, government, legal or bank charges. Community Infrastructure Levy and Asset Protection Permit are not included in pricing and is to be arranged by the client directly with the Developer (if applicable). Any alterations may incur additional charges. Confirm land price and availability prior to purchase. Simonds reserves the right to withdraw or amend pricing, inclusions and promotion at any time without notice. Please refer to the terms and conditions at www.simonds.com.au/terms-and-conditions. This package applies to VIC Range range only. Please speak with your sales consultant for further details. Pricing is current at 12/06/2024.

