



SABA 250

\$712,819

**Lot 20108 Maywood Road
Manor Lakes - Titled**

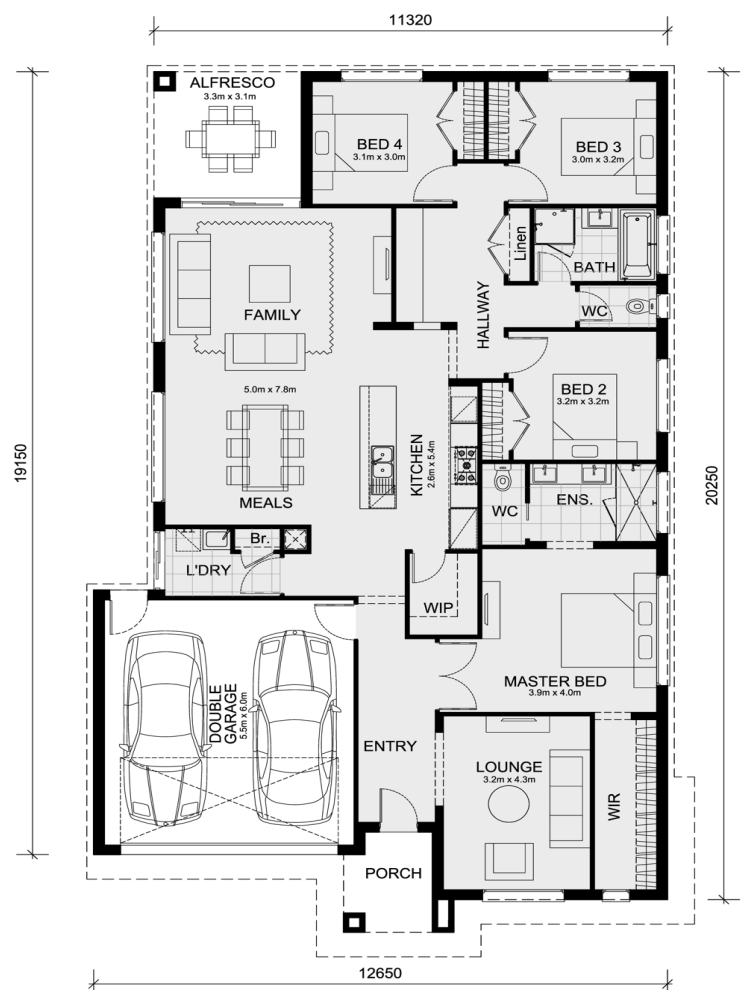
4  2  2 

NCC PRICE PAUSE – Single Story – \$19,245 of Savings*

- *NCC Price rewind price back to before May 1 - minus \$10,000
- *Low profile evaporative cooling + Low profile roof tiles
- *Brick infills to side and rear of home
- *LED downlights throughout
- *40mm VCS to kitchen
- *20mm VCS to bathroom & ensuite + tiled shower bases
- * 600mm Single Towel Rails or Rings & Toilet Roll Holders
- *800mm Wide Laminate Double Door Cabinet with 32mm Laminate Benchtop with Insert Trough to Laundry

FREE Added Value

- Inclusive of site costs & connections with H1 class slab as per standard inclusions!
- Quality floor coverings throughout entire home!
- Higher ceilings 2550mm to ground floor!
- Double Glazed Awning windows
- Downlights to living areas!
- Vitrified Compact Surface benchtop to kitchen!
- 900mm S/S upright oven and cook top with S/S canopy rangehood!
- Stainless steel Dishwasher and Microwave with trim kit!
- Overhead cupboards & wine rack! (Design specific)
- Remote control panel sectional lift garage door!
- 7 star energy with solar hot water!
- Flexible floor plans & so much more!
- NCC Compliant floorplans



Area Details

Land Size 448sqm Building Size 235sqm

Contact: Jay Yu
jay@mimosahomes.com.au

0414 416 828
www.mimosahomes.com.au