

HOUSE & LAND PACKAGE

- Stylish, practical floorplans
- Amazing on-trend inclusions beyond the essentials



Latitude 154 4M

3 2 2 13.03m

*Simplicity
range*

Lot: 17007 Butterscotch Esplanade, Wyndham Vale

Estate: Manor Lakes

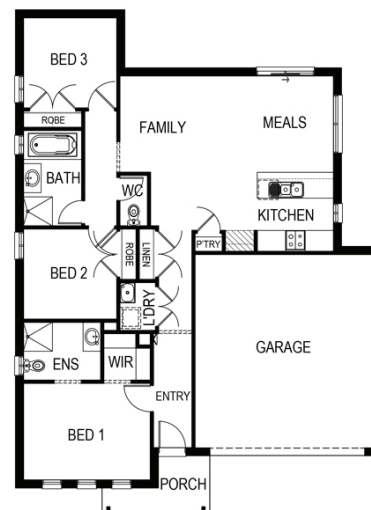
Block size: 440m²

Title Exp: September 2019

House Size: 15.48sq

Package Includes:

- Carpet and Floor tiles throughout
- Stainless steel upright cooker and rangehood
- Colorbond® roof
- Choice of affordable add on packs to complete your home
- 4 interior designed internal & 6 external colour schemes
- BAL 12.5 included
- Fixed Site Costs
- Developers Guidelines
- 6-star energy rating on BEST orientation
- Smart design to suit compact block sizes



www.fairhavenhomes.com.au

Jennifer Chua
t: 0455226316
e: jchua@fairhavenhomes.com.au

Upper Point Cook Display
33 Liverpool Street
POINT COOK, VIC 3030

Images are for illustration purposes only, driveway, landscaping, external lighting, furniture, window furnishings, & porch deck are not included. All pricing is based on our standard inclusions and site start within 6 months for Elegance & 12 months for Simplicity and Bridgewater from the initial deposit date. Floor plan depicts the garage size. Siting of the House is at the discretion of the Builder. The Builders reserves the right to withdraw or amend prices, inclusions, & special offers without notice. House & Land sold separately, & pricing may vary due to land availability. Price does not include; not limited to: transfer duty, stamp duty, settlement costs or any other fees associated with the land settlement. It is the Purchasers responsibility to make independent enquiries into restrictions on the property in relation to MCPs, Developer Guidelines, Covenants, Building Envelopes, POS & Estate Eng. and to confirm land prices & availability before purchasing land. Fairhaven Homes acts as Builder for the sale of the Building only. *House & Land packages excludes block specific corner treatment & acoustics requirements where applicable & are subject to Developers design panel for final approval & may need to be mirrored or altered to comply. The Purchaser may be required to upgrade façade should a similar façade be built/submitted within proximity & additional cost may apply. For full details please contact one of our New Home Consultants. Fairhaven Homes Pty Ltd. 699 449 497

PRICE EFFECTIVE: 01/02/2019