




CHURCHILL 220

\$662,348

**Lot 20432 Maywood Road
Manor Lakes**

4  **2**  **2** 

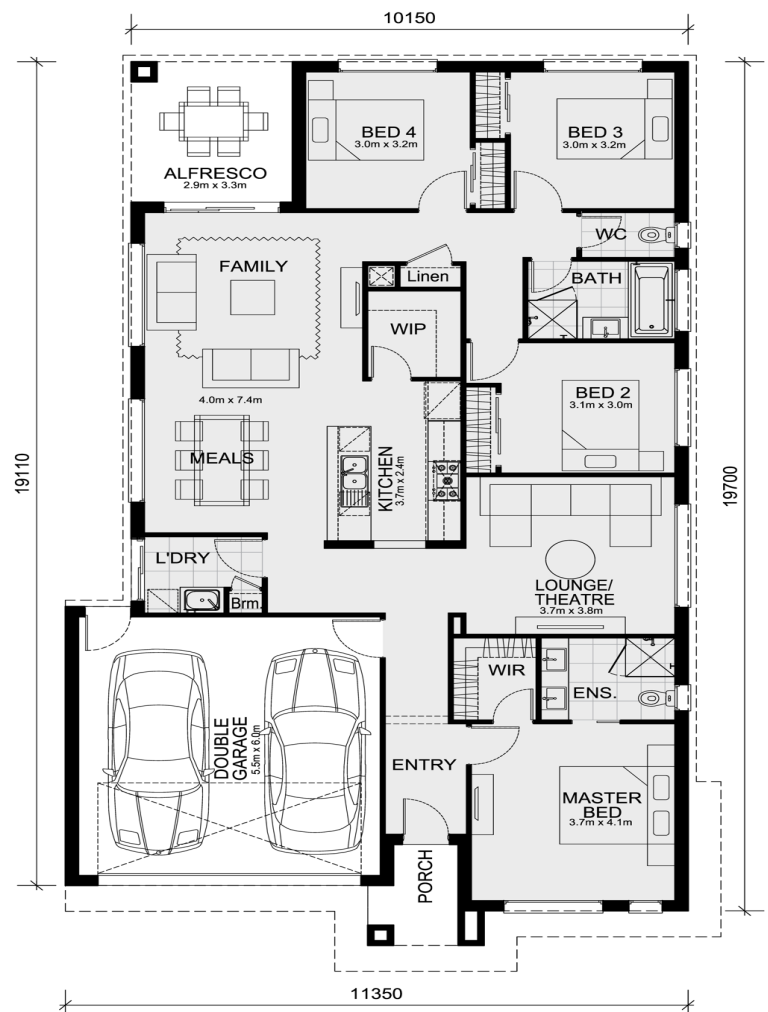
Mimosa Homes Proudly Presents

The Churchill 220 House and Land Package!

* Mimosa Homes New Added Value Inclusions:

- Inclusive of site costs & connections with H1 class slab as per standard inclusions!
- 50-year Structural Warranty!
- Quality floor coverings throughout entire home!
- Higher ceilings 2550mm to ground floor!
- Double Glazed Awning windows!
- LED Downlights to entire home!
- Vitrified Compact Surface benchtop to kitchen, bathroom & ensuite!
- 900mm S/S upright oven and cook top with S/S canopy rangehood!
- Stainless steel Dishwasher and Microwave
- Overhead cupboards to kitchen (Design specific)
- 2000mm High framed shower screen to ensuite & bathroom!
- 7 star energy!
- Brick Infills to Side and Rear of Home (2550mm Ceiling Height)
- Low Profile Roof Tiles
- Low Profile Evaporative Cooling Unit
- Flexible floor plans & so much more!

CALL BUILDER DIRECT! Visit our display home at 3-5 Cooma Street
Manor Lakes (Manor Lakes Estate)



Area Details

Land Size 400sqm Building Size 206sqm

Contact: Jay Yu
jay@mimosahomes.com.au

0414 416 828
www.mimosahomes.com.au