

A SMART MOVE

 Reside
Collection

THE TERRACES

THE GREVILLEA RELEASE



Artist Impression

The Dennis Family experience



The Dennis Family Corporation is one of Australia's largest privately owned residential developers and home builders, and a trusted name in the property industry. Backed by over 60 years of experience, Dennis Family has a proud reputation for delivering quality and excellence within its residential communities and innovative built form housing solutions.

During the past two decades, Dennis Family has added to its reputation by constructing high quality Townhouses and Apartments, working closely with various builder partners to deliver many hundreds of homes of every size and style that meet the needs of growing families.

Modern and stylish, the Reside Collection showcases Dennis Family's commitment to deliver architecturally designed, contemporary family homes for today's lifestyle that do not compromise on space, functionality or quality.



Introducing the Reside Collection Terraces

Love the lifestyle

The Reside Collection Terraces have been designed to maximise every square metre of space to complement your lifestyle.

The expansive open-plan design features a thoughtfully appointed kitchen, complete with butler's pantry, that makes preparing and sharing family meals a pleasure.

You will love the added comfort of a separate retreat, providing space for every family member to relax and unwind.

The second level has been thoughtfully designed with families in mind, offering spacious bedrooms each with dedicated storage.

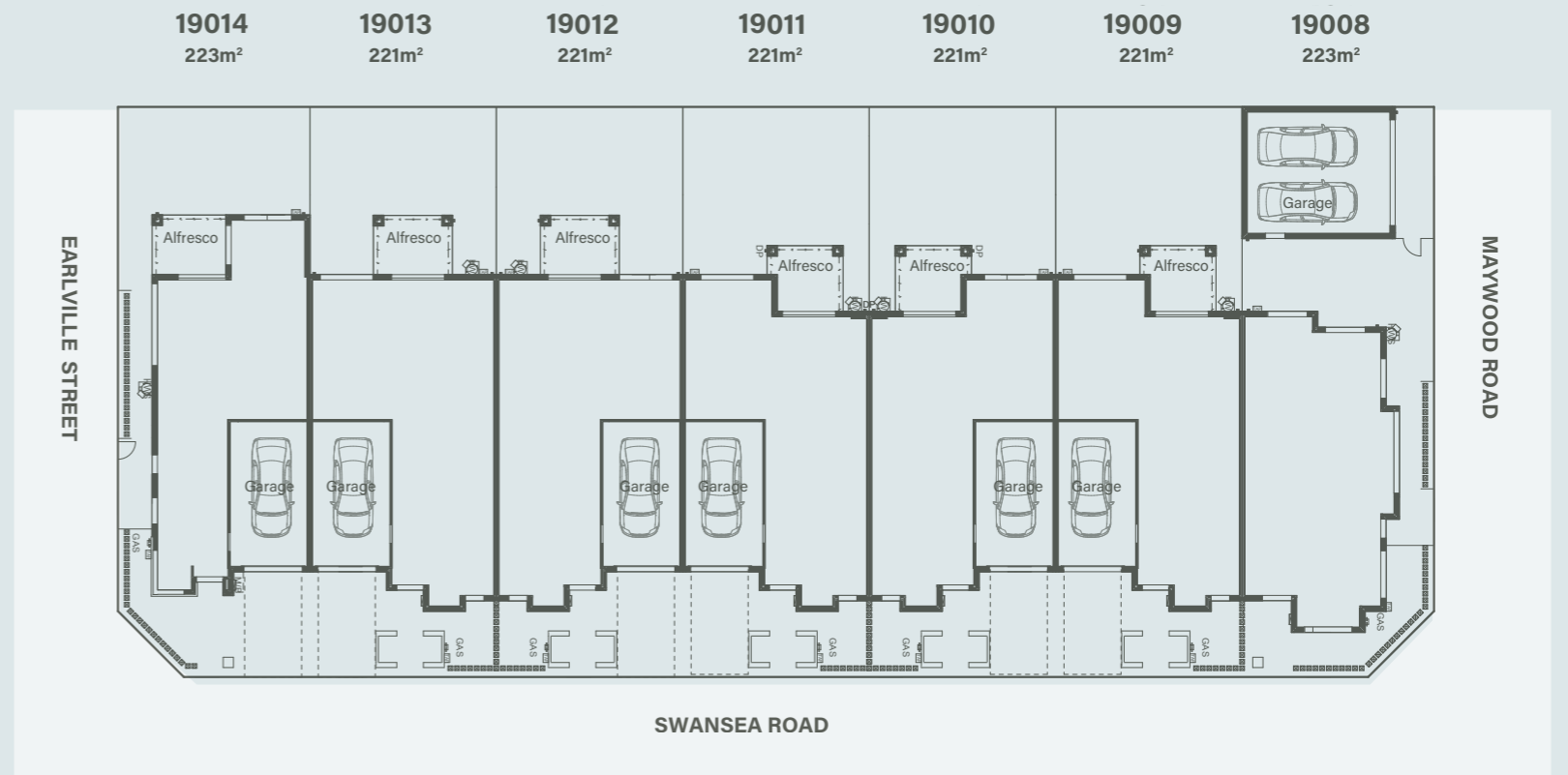
Your new Terrace home will be delivered complete, ready for you and your family.

Enjoy the benefits

- Designed and built by Dennis Family Corporation
- Fixed price – no extra costs
- Only 10% deposit and the balance upon completion – no progress payments
- \$10k First Home Buyer Grant for eligible purchasers*
- Victorian Homebuyer Fund*
- Stamp duty savings for eligible owner occupiers*
- Views over a 2.2 hectare natural wetland



*Stunning from
the outside*



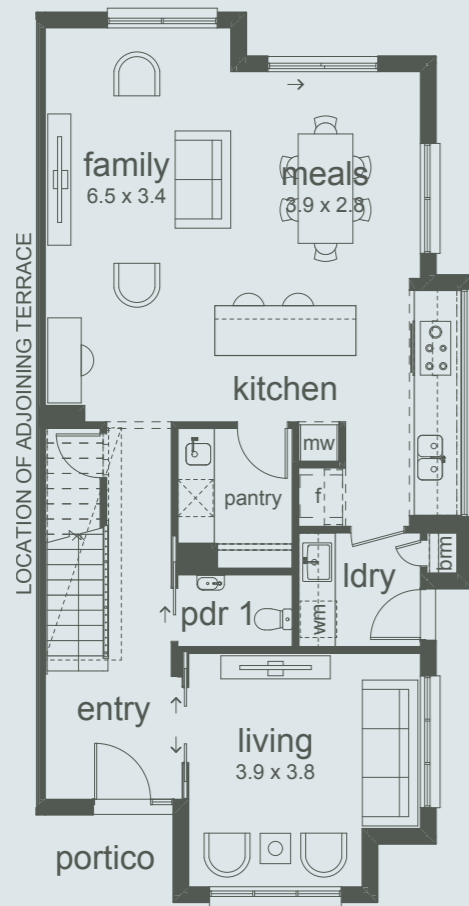
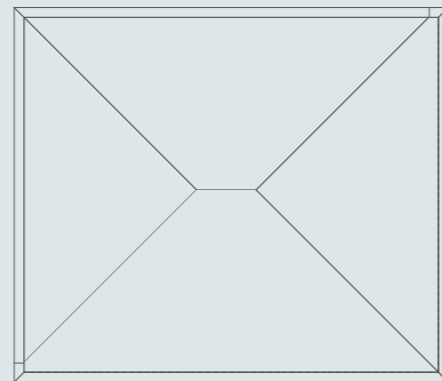
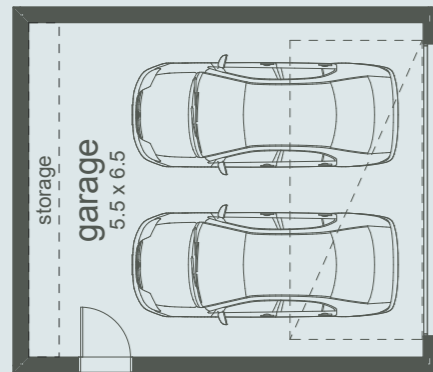
Images, drawings and descriptions are for illustration only, are not to scale and may differ from final built form. ©2023. Except as permitted under the Copyright Act 1968 no material anywhere on this website or brochure may be copied reproduced altered or further disseminated in any form without prior written permission.

Lot 19008

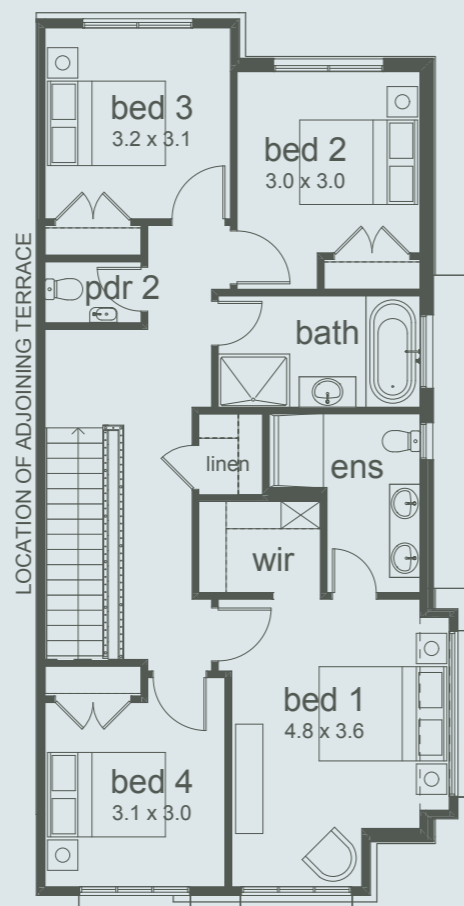
4 | 2.5 | 2 Land 223m²

Family: 6.5 x 3.4m Bed 2: 3.0 x 3.0m
 Meals: 3.9 x 2.8m Bed 3: 3.2 x 3.1m
 Living: 3.9 x 3.8m Bed 4: 3.1 x 3.0m
 Bed 1: 4.8 x 3.6m

Total: 24.53 house squares



GROUND FLOOR



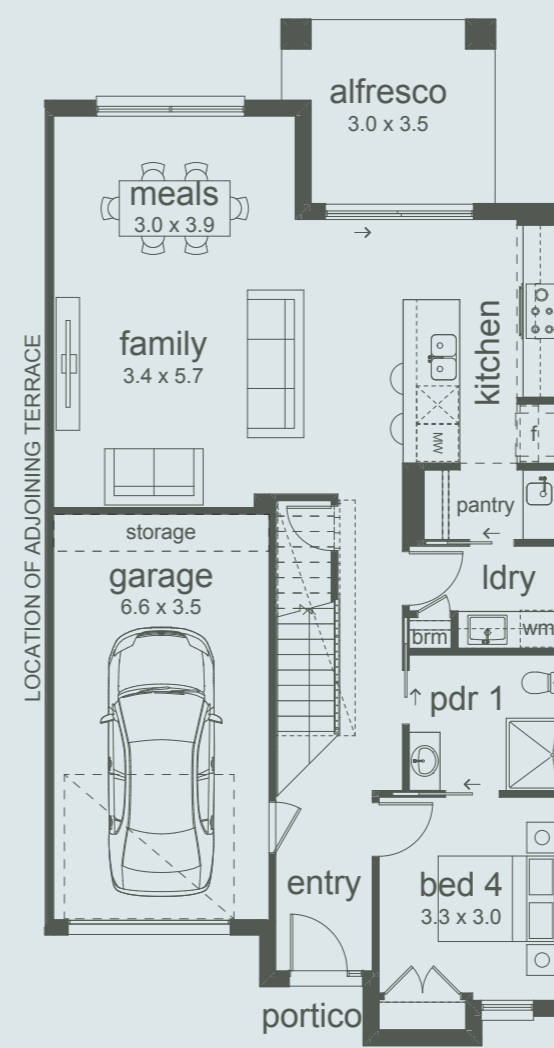
FIRST FLOOR

Lot 19009

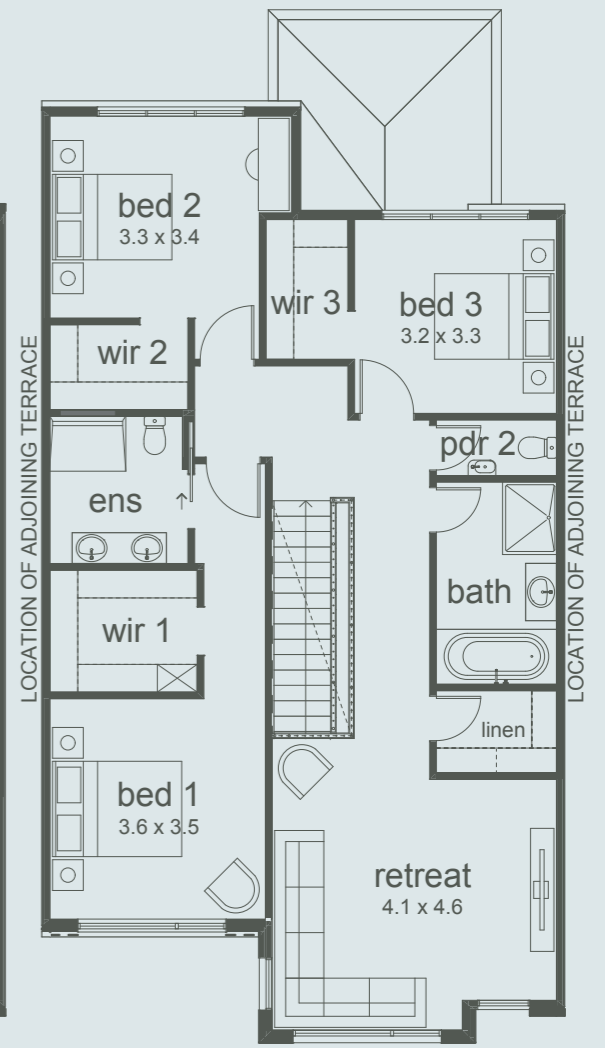
4 | 2.5 | 1 Land 221m²

Family: 3.4 x 5.7m Bed 2: 3.3 x 3.4m
 Meals: 3.0 x 3.9m Bed 3: 3.2 x 3.3m
 Alfresco: 3.0 x 3.5m Bed 4: 3.3 x 3.0m
 Bed 1: 3.6 x 3.5m Retreat: 4.1 x 4.6m

Total: 25.80 house squares



GROUND FLOOR



FIRST FLOOR

Lot 19010

4 | 2.5 | 1 Land 221m²

Family: 3.4 x 5.7m Bed 2: 3.3 x 3.4m
 Meals: 3.0 x 3.9m Bed 3: 3.2 x 3.3m
 Alfresco: 3.0 x 3.5m Bed 4: 3.3 x 3.0m
 Bed 1: 3.6 x 3.5m Retreat: 4.1 x 4.6m

Total: 25.80 house squares

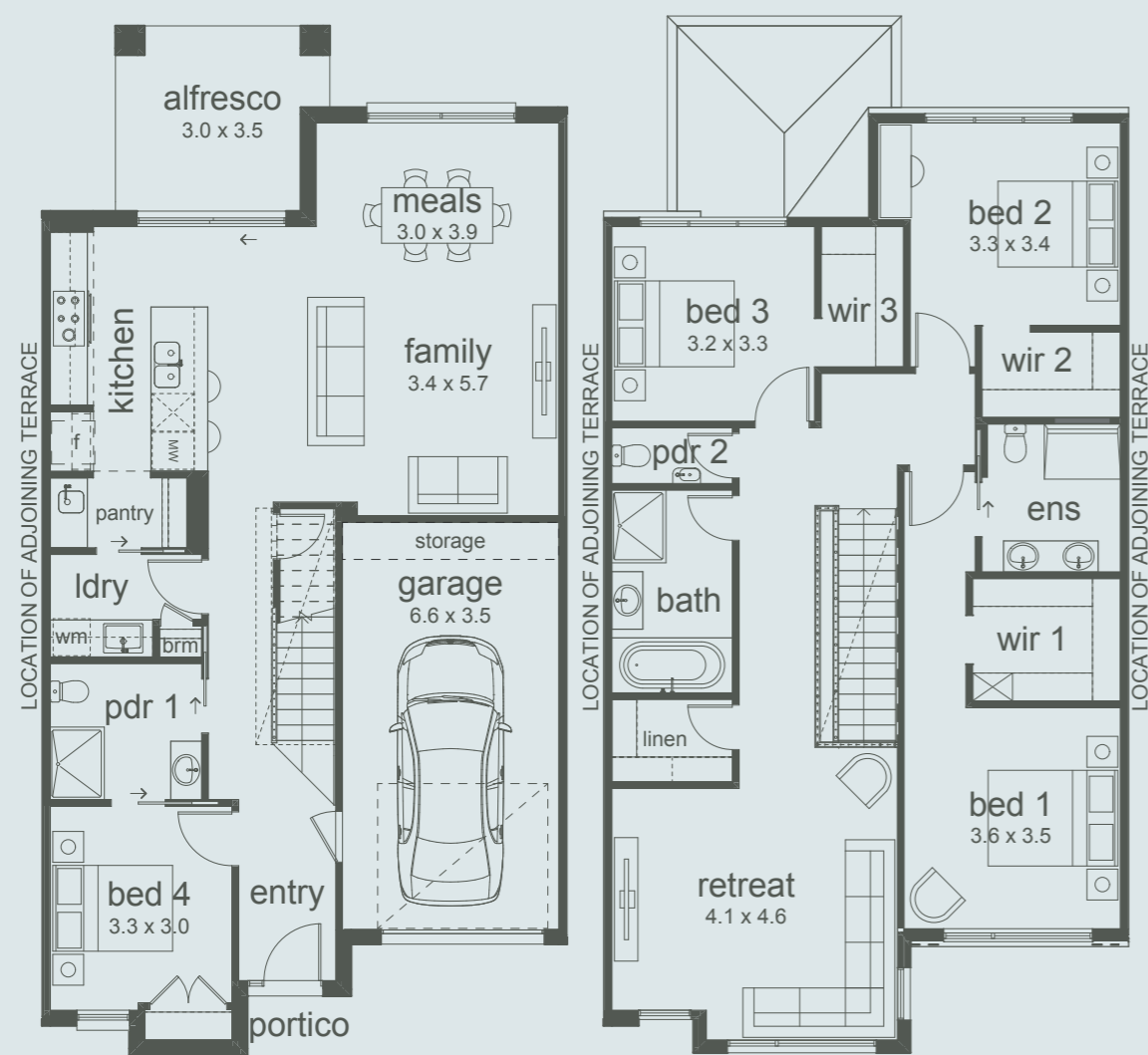
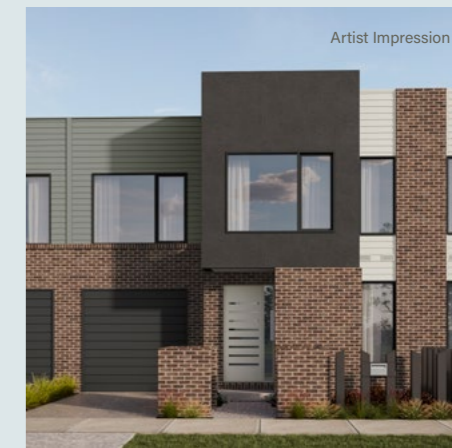


Lot 19011

4 | 2.5 | 1 Land 221m²

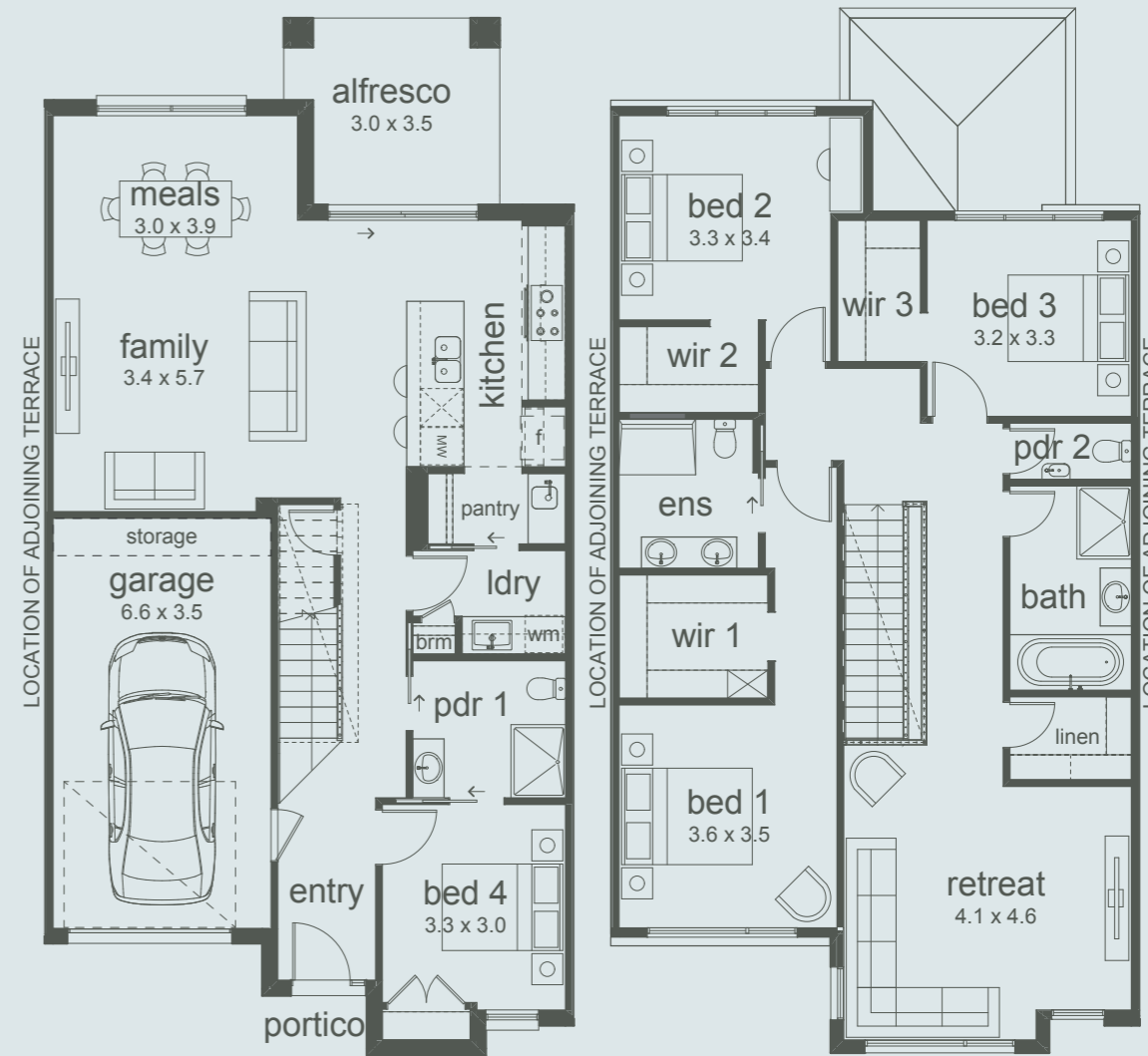
Family: 3.4 x 5.7m Bed 2: 3.3 x 3.4m
 Meals: 3.0 x 3.9m Bed 3: 3.2 x 3.3m
 Alfresco: 3.0 x 3.5m Bed 4: 3.3 x 3.0m
 Bed 1: 3.6 x 3.5m Retreat: 4.1 x 4.6m

Total: 25.80 house squares



GROUND FLOOR

FIRST FLOOR



GROUND FLOOR

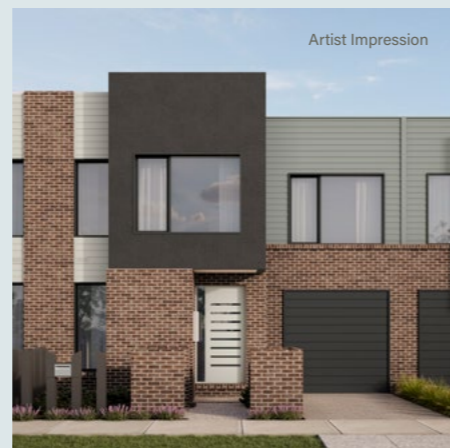
FIRST FLOOR

Lot 19012

4 🛏️ | 2.5 🚿 | 1 🚗 Land 221m²

Family: 4.6 x 4.6m Bed 2: 3.3 x 3.5m
 Meals: 3.1 x 3.6m Bed 3: 3.5 x 3.2m
 Alfresco: 2.7 x 3.6m Bed 4: 3.2 x 3.0m
 Bed 1: 4.2 x 3.5m Retreat: 4.7 x 4.6m

Total: 27.29 house squares

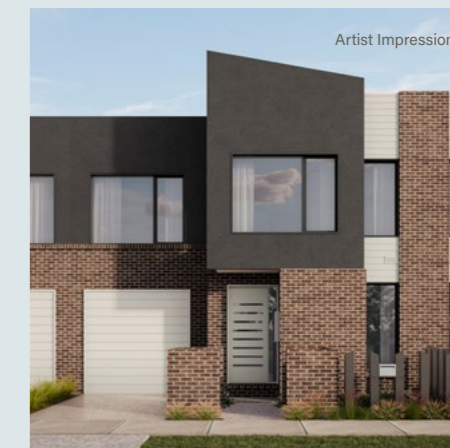


Lot 19013

4 🛏️ | 2.5 🚿 | 1 🚗 Land 221m²

Family: 4.6 x 4.6m Bed 2: 3.3 x 3.5m
 Meals: 3.1 x 3.6m Bed 3: 3.5 x 3.2m
 Alfresco: 2.7 x 3.6m Bed 4: 3.2 x 3.0m
 Bed 1: 4.2 x 3.5m Retreat: 4.7 x 4.6m

Total: 27.29 house squares



GROUND FLOOR

FIRST FLOOR



GROUND FLOOR

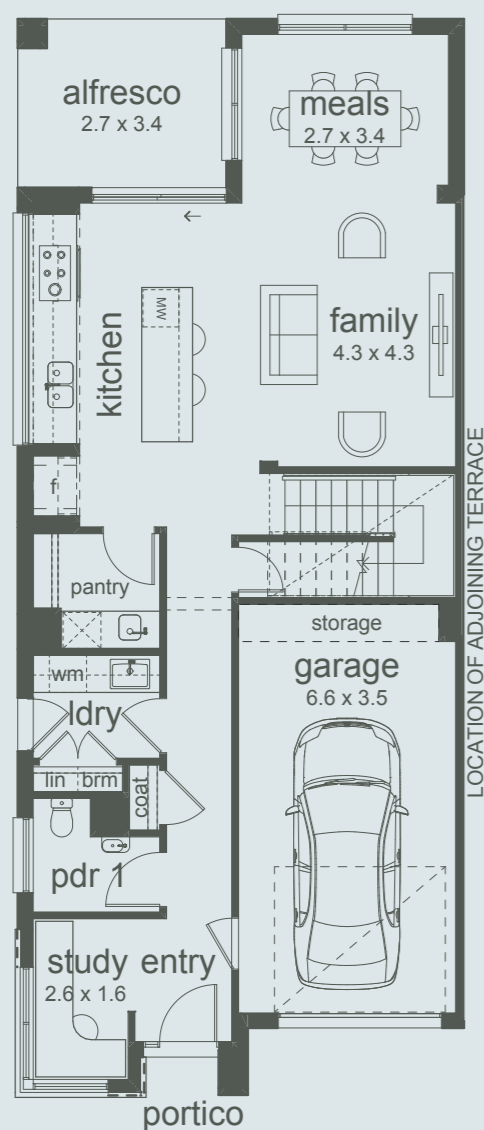
FIRST FLOOR

Lot 19014

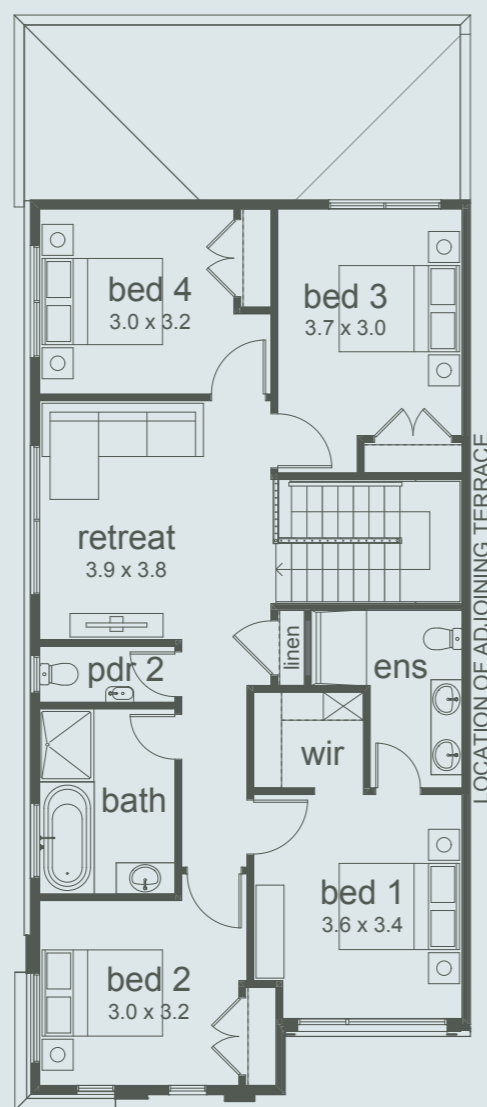
4 | 2.5 | 1 Land 223m²

Family: 4.3 x 4.3m Bed 3: 3.7 x 3.0m
 Meals: 2.7 x 3.4m Bed 4: 3.0 x 3.2m
 Alfresco: 2.7 x 3.4 Retreat: 3.9 x 3.8m
 Bed 1: 3.6 x 3.4m
 Bed 2: 3.0 x 3.2m

Total: 23.52 house squares



GROUND FLOOR



FIRST FLOOR

What you'll get in your new home

The Reside Collection Terraces possess exceptional attention to detail and high-quality finishes throughout. A complete turnkey solution; Your home will be ready for your family to move in and start living.

External Features

- Clay bricks with natural colour rolled mortar joints.
- Feature render finish to areas indicated on plans.
- Clear glazed aluminium powder coated windows and sliding doors.
- Flyscreens to opening windows of house.
- Keyed locks to all opening windows.
- Colorbond steel roof.
- Brickwork above garage door.
- Painted fibre cement sheet infill to top of brickwork above windows and doors.
- Colorbond fascia, barges, quad gutter and downpipes.
- Trim to ceiling of portico and alfresco (if applicable).
- Plaster ceiling to portico (if applicable) with no visible plastic joins.

Doors and Door Furniture

- Timber front entry door frame.
- Security leverset in bright chrome finish for front door.
- Designer front door with gloss enamel paint and clear sidelight glazing (if applicable).
- Flush panel internal doors with gloss enamel paint finish.
- Plaster openings to walk-in robes.
- Bright chrome handles to doors, cupboards and robes.
- Rectangular flush pulls to sliding doors (if applicable).
- Bright chrome deadlock to internal garage door (detached garages not applicable).
- Stainless steel deadlock to external garage door.
- Chrome hinges, latches and striker plates to all hinged doors.
- Keyed lock to external sliding door (if applicable).
- Cushioned plastic door stops.

Internal Features

- 75mm step ceiling cornice to Family, Meals, Kitchen, and Entry.
- 75mm cove ceiling cornice for remaining rooms and garage.
- Gloss enamel single bevel architraves and skirtings.
- Two coat paint system: low sheen walls, premium flat acrylic ceilings, gloss enamel internal woodwork and doors.

- Block out roller blinds to all windows and external sliding doors (excluding kitchen window and laundry door where indicated on plans).
- Skylight with access hatch.
- Wall tiles to kitchen, ensuite, bathroom, laundry, WC and powder rooms.
- Floor tiles and matching skirting tiles to ensuite, bathroom, laundry, WC and powder rooms.
- Laminate timber look flooring to entry, ground-floor hallway, kitchen, pantry, meals and living.
- Carpet to bedrooms, WIRs, and retreat.

Kitchen

- Stainless steel undermount double bowl sink.
- Caesarstone benchtops (colour and material subject to availability).
- Bank of four drawers with cutlery insert to top drawer.
- Overhead cupboards with two adjustable shelves.
- Fridge cupboards with shelf.
- Butler's pantry fit out includes: cabinetry, stone benchtop, tiled splashback, stainless steel undermount single bowl sink, mixer tap, power point, and coloured laminate shelving.

Appliances

- Smeg 900mm satin stainless steel 5 burner gas cooktop with cast iron trivets.
- Smeg stainless steel 900mm classic thermoseal electric under-bench oven.
- Smeg 900mm stainless steel undermount rangehood, flued to outside (single storey homes) or vented through external wall (double storey homes).
- Smeg 600mm under-bench stainless steel dishwasher.
- Provision for future microwave in cabinetry with single power point.

Cabinetry

- Laminate doors with protective edging for laminate benchtops in laundry, ensuite, bathroom and powder room (if applicable).
- Coloured laminate to underside of overhead cabinetry in kitchen, pantry and laundry.
- Soft close hinges and drawer runners.
- Designer cabinet handles to all laminate cabinets.
- White melamine lined cupboards and drawers.

Ensuite, Bathroom and Powder Room

- Double vanity to bedroom 1 ensuite.
- Caesarstone benchtops (colour and material subject to availability).
- Inset vanity basins with overflow.
- Large, fixed mirror with polished edge to ensuite and bathroom.
- 1700mm acrylic island bath.
- Tiled shower base with channel grate to bedroom 1 ensuite.
- Shower storage shelf to bedroom 1 ensuite shower enclosure.
- Frameless shower screen in polished silver (light scheme) or black (dark scheme) to bedroom 1 ensuite shower.
- Acrylic shower base to bathrooms and ground floor ensuites.
- Semi-frameless shower screen in silver (light scheme) or black (dark scheme) with clear safety glass, pivot door and chrome (light scheme) or black (dark scheme) knob to bathrooms and ground floor ensuites.
- Rimless close coupled white toilet suite with soft close seat.
- Double towel rails in bright chrome (light scheme) or black (dark scheme).
- Toilet roll holders beside all toilets in bright chrome (light scheme) or black (dark scheme).
- Towel rings to powder rooms in bright chrome (light scheme) or black (dark scheme).
- Vitreous china close coupled, soft close seat and dual flush toilet suite.

Tapware

- Swivel mixer tap to kitchen and pantry sinks and laundry trough in chrome (light scheme) or black (dark scheme).
- Mixer tap to all vanity basins in chrome (light scheme) or black (dark scheme).
- Bath mixer set in chrome (light scheme) or black (dark scheme).
- Wall mixer to all showers in chrome (light scheme) or black (dark scheme).
- Shower rail with basket to all showers in chrome (light scheme) or black (dark scheme).
- Garden taps provided to front and rear.

Laundry

- Laminated square edge benchtop.
- Laminated cabinetry with white melamine lined storage cupboards.
- Laminate doors with protective edging and square edge laminated benchtops.
- Designer cabinet handles to cabinetry.
- 45 litre stainless steel single tub.
- Concealed stop taps in cabinet for washing machine.

Storage

- Coloured laminate 600 wide shelving and bank of drawers to bedroom 1 walk-in-robe.
- White melamine shelf, chrome hanging rail and gloss enamel flush panel doors for all other bedroom robes.
- Linen cupboard with four white melamine shelves.
- Broom cupboard with melamine shelf.

Energy Efficiency Features

- All standard home designs include an independent 6-star minimum energy rating.
- Batt ceiling insulation (excludes garage, portico and alfrescos unless below an upper floor of a double storey home).
- Batt insulation and wall wrap to all external walls.
- Draught excluders and bulb weather seals to external hinged doors.
- Draft excluder and foam seal to internal garage access door.
- Vented exhaust fan with built in draft stopper above all showers and enclosed toilet suites.
- Water efficient AAA rated tapware, showerheads and toilets.
- Gas boosted solar hot water system.

Hot Water

- 160 litre hot water system including roof collector, ground mounted tank and 6-star integrated gas booster.

Heating & Cooling

- Multi-head split system for kitchen, meals and family area and individual bedrooms.

Staircase

- Carpeted staircase with chrome balusters and newel post.
- Painted stringer, clear finish timber handrail and timber mitred margins.

Electrical

- Three double power points to kitchen benches.
- Three double power points to bedroom 1.
- Two double power points to all other bedrooms and study rooms (if applicable).
- Two double power points to all living areas.
- One double power point to ensuite, bathroom, laundry and garage.
- One single power point to cooktop, dishwasher space and microwave space.
- One weatherproof power point to exterior.
- 9W LED downlights to selected rooms (as indicated on plans). 9W energy saving light globes with batten fixed white conical shades to all other rooms.
- Weatherproof batten holder to each exterior door (excluding garage).
- Mains power ionisation smoke alarms with battery backup.
- Two TV points and 7m co-axial cable to roof space.
- Safety switch, miniature circuit breakers and earth leakage to meter box.

Garage Accommodation

- Sectional door.
- Remote control with three transmitters (one wall mounted).
- External weatherproof flush panel rear access door with steel jamb.

Construction Features

- Engineer designed waffle pod concrete slab.
- Alfresco with plaster lined ceiling and concrete floor (if applicable).
- 2,730mm nominal ceiling height for ground floor and 2,580mm nominal ceiling height for first floor of double storey homes. 2580mm nominal ceiling height to isolated garages (lot specific).
- Constructed for low level of bushfire attack. Bushfire Attack Level (BAL) – Low.

Termite Treatment

- Part A and B termite protection to home with collars to slab penetrations.

Home Connections

- Includes all surface site works with stormwater, sewer, mains gas, mains water and underground 3 phase power connection.

Landscaping

- Fencing and landscaping to front and rear yards.
- Exposed aggregate concrete driveway and paths.
- Letterbox and folding clothesline.



Light colour scheme



1. 2,730mm ceilings to ground floor
2. Warm white downlights
3. Dusk Arum single roller blackout blinds
4. Haymes Saltbush Plains walls
5. Haymes Dennis White ceiling
6. Brooklyn, Columbia floor laminate



- | | | |
|---|--|--------------------------------------|
| 1. 2,730mm ceilings to ground floor | 4. Chrome swivel mixer tap | 7. Haymes Saltbush Plains walls |
| 2. SMEG 900mm 5 burner gas cooktop and 900mm electric under-bench oven | 5. Tiled splashback in Hynes Square Mosaic White Gloss | 8. Haymes Dennis White ceiling |
| 3. Caesarstone benchtops (colour and material subject to availability). | 6. Laminex Alpine Mist 8527 on all kitchen cabinetry | 9. Brooklyn, Columbia floor laminate |
- Not shown:
SMEG 600mm stainless steel dishwasher



- | | | |
|---|---|---|
| 1. Caesarstone benchtops (colour and material subject to availability). | 5. Crystal 'Euro' Semi-frameless 2000mm shower screen with clear safety glass and pivot door with chrome knob | 9. Hynes Warehouse White Matt floor tiles |
| 2. Delana Oak 8966 Natural Finish Vertical Grain bathroom cabinetry | 6. Chrome shower tapware and wall mixer | Not shown:
2,580mm ceilings to second floor
Chrome 800mm double towel rail
Haymes Dennis White ceiling |
| 3. Polished edge mirror | 7. Hynes Warehouse White Matt 450 x 450mm shower wall tiles | |
| 4. Chrome tapware basin and matte chrome mixer tap | 8. Haymes Saltbush Plains walls | |

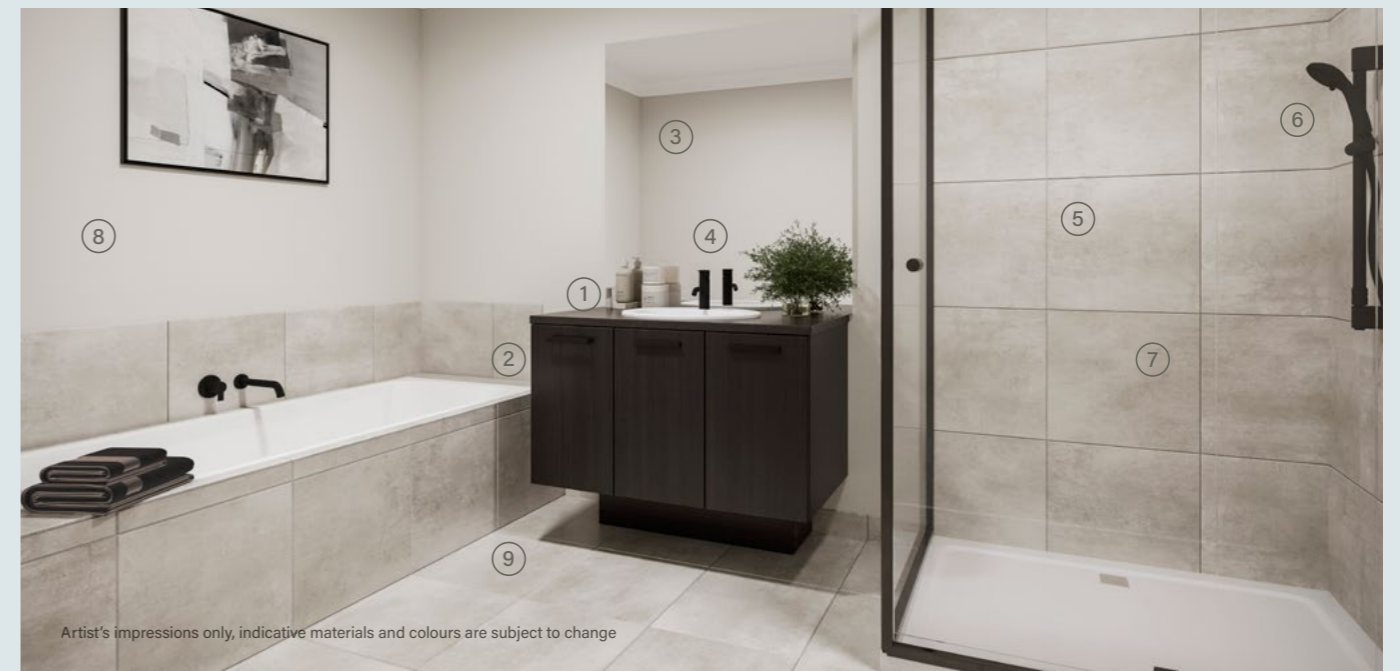
Dark colour scheme



1. 2,730mm ceilings to ground floor
2. Warm white downlights
3. Dusk Arum single roller blackout blinds
4. Haymes Feather Grey walls
5. Haymes Dennis White ceiling
6. Brooklyn, Ridgewood floor laminate



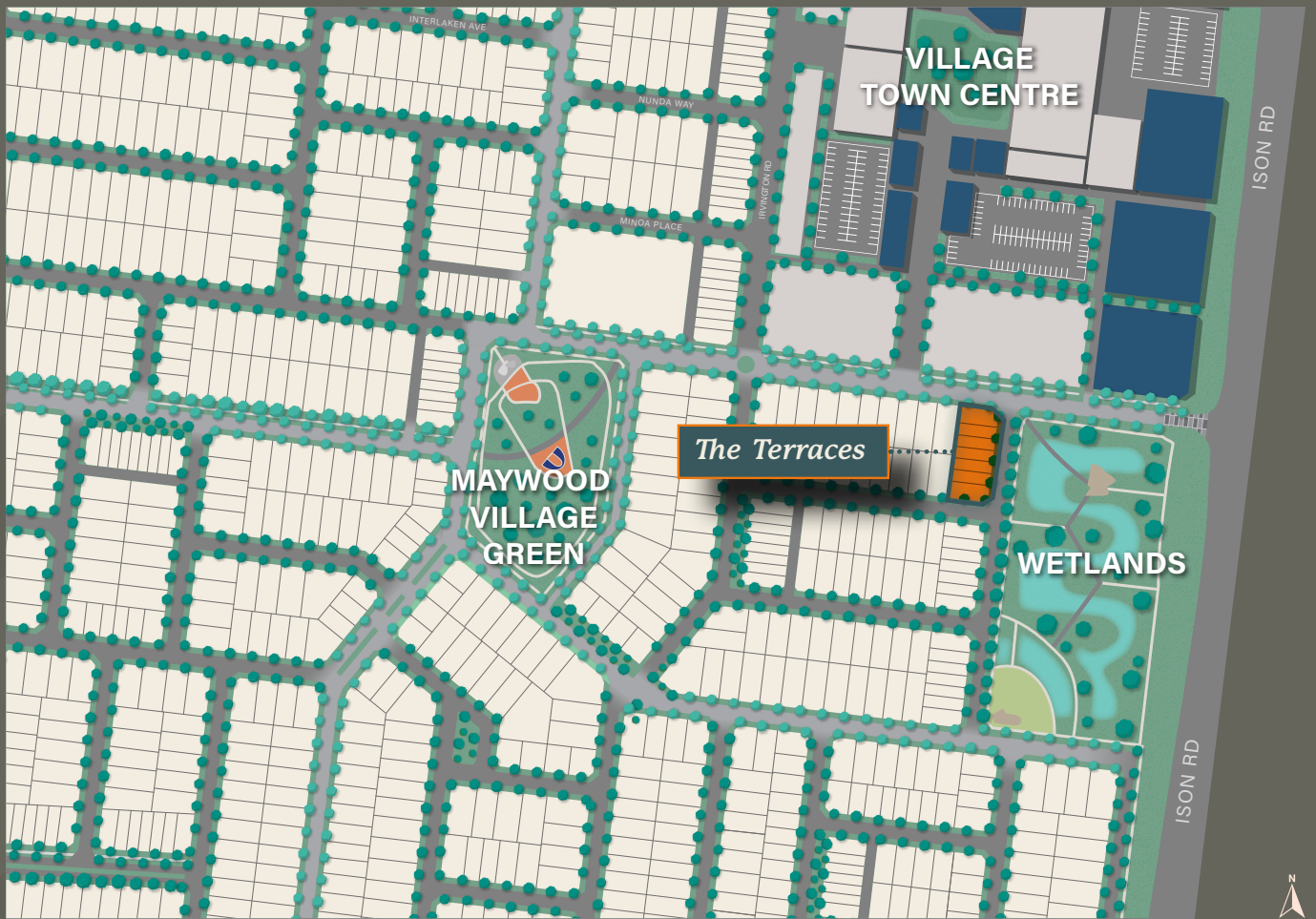
- | | | |
|---|---|---|
| 1. 2,730mm ceilings to ground floor | 5. Tiled splashback in Hynes Athens Satin Mosaic 45 x 95mm sheeted mosaic | 9. Brooklyn, Ridgewood floor laminate |
| 2. SMEG 900mm 5 burner gas cooktop and 900mm electric under-bench oven | 6. Laminex Pearl Grey 336 on all kitchen cabinetry | Not shown:
SMEG 600mm stainless steel dishwasher |
| 3. Caesarstone benchtops (colour and material subject to availability). | 7. Haymes Feather Grey walls | |
| 4. Matte black swivel mixer tap | 8. Haymes Dennis White ceiling | |



- | | | |
|--|--|--|
| 1. Caesarstone benchtop (colour and material subject to availability). | 5. Crystal 'Euro' Semi-frameless 2000mm shower screen with clear safety glass and pivot door with black knob | 9. Beaumonts Belga Taupe floor tiles |
| 2. Laminex Smokey Sapelle 480 Natural Finish bathroom cabinetry | 6. Black shower tapware and wall mixer | Not shown:
2,580mm ceilings to second floor
Matte black 800mm double towel rail
Haymes Dennis White ceiling |
| 3. Polished edge mirror | 7. Beaumonts Belga Taupe Matt shower wall tiles | |
| 4. Matte black tapware basin and matte black mixer tap | 8. Haymes Feather Grey walls | |



Reside Collection



218 Manor Lakes Boulevard, Manor Lakes

1300 334 524

info@manorlakes.com.au

manorlakes.com.au

This brochure is not a contract and is not binding. Photos, maps, plans, drawings and descriptions are for illustration only, may include computer renders, are not to scale and may differ from final built forms. Actual lots, stages, facilities, amenities, infrastructure and their configuration are subject to statutory approval and may change without notice. All reasonable care has been taken to ensure accuracy however the information published may change from time to time to reflect changing circumstances, laws and regulations and without notice. Your contract of sale will set out all binding terms and relevant property information. Dennis Family Homes reserves the right to modify specified products, brands, and models outlined, with the discretion to substitute items of comparable style, quality, and price, if required by regulatory changes, or otherwise, as reasonably necessary. Prospective buyers should make and rely on their own enquiries and seek independent legal and financial advice before entering into any binding obligations. To the full extent permitted by law all liability is expressly excluded whether in negligence or otherwise, for any loss or damage in respect of, or arising from, reliance on this document. DFC (Project Management) Pty Ltd ABN 83 161 448 139 is project manager for the Manor Lakes Estate. The Manor Lakes logo is a registered trade mark used under licence © 2023. Dennis Family Homes Pty Ltd ACN 056254249 is a registered building practitioner. Builder licence number CDB-U 49195 (VIC).