



HOUSE & LAND

\$549,078*

LOLLIPOP HILL – MANOR LAKES

Lot 13513 Rosewater Street
Manor Lakes VIC 3024

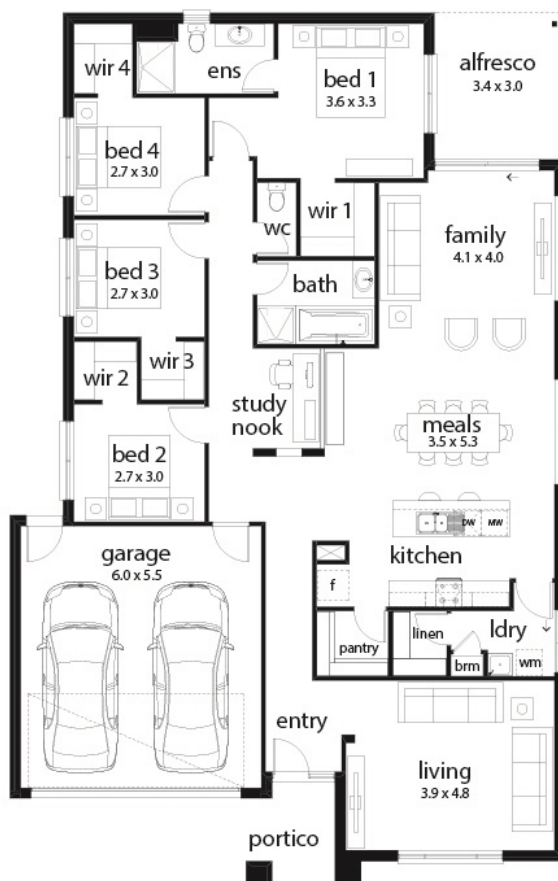
🚗 4 🏠 2 🚗 2 🚗 2 🏠 1

Pearl 24 Sahna Façade

(Aspirations)

Home size: 24.42sq Land size: 448m²

- ✓ Aspirations Inclusions
- ✓ BAL 12.5 inclusions
- ✓ Fixed Site Costs
- ✓ Developer/Estate Covenant Requirements
- ✓ Sectional Garage Door
- ✓ Remote control to garage door
- ✓ Flyscreens
- ✓ 900mm Technica appliance pack
- ✓ Gas ducted heating
- ✓ Floor Coverings
- ✓ Current Promotion
- ✓ Series 1 timber-look laminate flooring to Entry/Kitchen/Meals/Family
- ✓ Carpet to remaining areas
- ✓ Concrete paving to driveway and portico (up to 35m²)
- ✓ Lockable internal access door from garage
- ✓ Overhead cupboards with bulkhead above to kitchen
- ✓ Designer mixer tapware throughout
- ✓ 20mm Caesarstone benchtops to kitchen



Go to dennisfamily.com.au or call
1800 DENNIS for more information.

Gurwinder & Anik
0448895801/0448321524
Reference HL0034530