



# HOUSE & LAND

# \$516,061\*

## LOLLIPOP HILL – MANOR LAKES

Lot 13532 Rosewater Street  
Manor Lakes VIC 3024

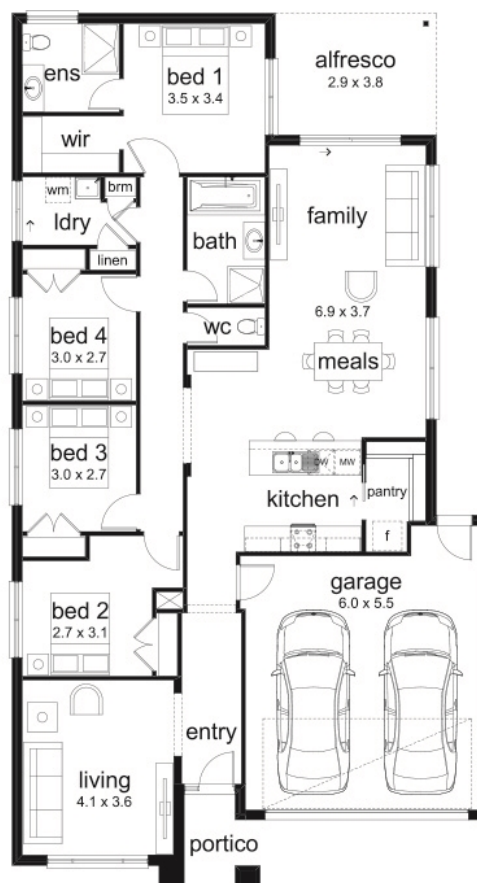
🚗 4 🏠 2 🚗 2 🚗 2 🏠 1

### Pearl 23 Melba Façade

(Aspirations)

Home size: 22.41sq Land size: 400m<sup>2</sup>

- ✓ Aspirations Inclusions
- ✓ BAL 12.5 inclusions
- ✓ Fixed Site Costs
- ✓ Developer/Estate Covenant Requirements
- ✓ Recycled water connection
- ✓ NBN/Opticom/Redtrain/Multinet/CNT Corp. connection
- ✓ Double Garage
- ✓ Remote control to garage door
- ✓ Flyscreens
- ✓ 900mm Technica appliance pack
- ✓ Gas ducted heating
- ✓ Current Promotion
- ✓ Series 1 timber-look laminate flooring to Entry/Kitchen/Meals/Family
- ✓ Carpet to remaining areas
- ✓ Concrete paving to driveway and portico (up to 35m<sup>2</sup>)
- ✓ Lockable internal access door from garage
- ✓ European designed stainless steel appliances
- ✓ 20mm Caesarstone benchtops to kitchen



Go to [dennisfamily.com.au](http://dennisfamily.com.au) or call  
**1800 DENNIS** for more information.  
Anik 0448321542/ Gagan 0408307514  
Reference HL0034569