



a family building homes for families™



HOUSE & LAND

\$513,258*

LOLLIPOP HILL – MANOR LAKES

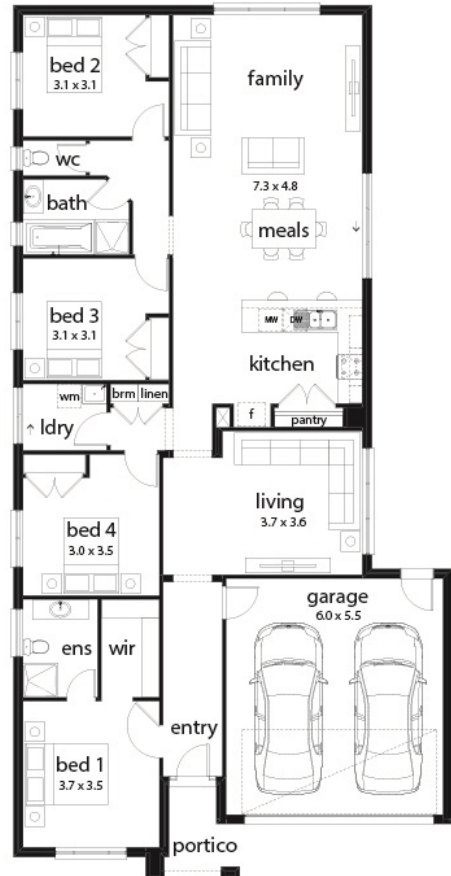
Lot 13534 Rosewater Street
Manor Lakes VIC 3024

4 2 2 2

Oxford 23 Estate Façade
(Aspirations)

Home size: 22.51sq Land size: 400m²

- ✓ Aspirations Inclusions
- ✓ BAL 12.5 inclusions
- ✓ Fixed Site Costs
- ✓ Developer/Estate Covenant Requirements
- ✓ Sectional Garage Door
- ✓ Remote control to garage door
- ✓ Stainless Steel Appliances
- ✓ 900mm Technica appliance pack
- ✓ Gas ducted heating
- ✓ Floor Coverings
- ✓ Concrete paving to driveway and portico (up to 35m²)
- ✓ Designer front entry door
- ✓ Lockable internal access door from garage
- ✓ Overhead cupboards with bulkhead above to kitchen
- ✓ Designer mixer tapware throughout
- ✓ 20mm Caesarstone benchtops to kitchen



Go to dennisfamily.com.au or call
1800 DENNIS for more information.
Gurwinder Randhawa 0448 895 801
****WE WELCOME YOUR ENQUIRIES****
Reference HL0034616

*Subject to land and build contracts for specified lot, available until sold. 1. Images not to scale and may differ from final built forms. 2. Landscaping, driveway, retaining walls, paving, decking, fencing, decorator items and furnishings not included. 3. Unless stated, site costs are not fixed, package price may increase depending on: rock removal and services connection costs, retaining walls, tree root mitigation, developer requirements, BAL zoning and other statutory requirements. 4. "Fixed site costs" packages include rock removal and services connection only, exclude retaining walls and tree root mitigation. 5. Price based on facade shown, excludes stamp duty, legal and transaction costs eg FIRB, finance fees. 6. Customers required to enter into a separate land contract with the land developer. 7. Prospective buyers should make and rely on their own enquiries and seek independent legal and financial advice. 8. Package not available in conjunction with any other promotions. © 2019. Dennis Family Homes Pty Ltd ACN 056254249 is a registered building practitioner CDB-U 49195 (Vic) and 173511C (NSW).