



HOUSE & LAND

\$488,618*

LOLLIPOP HILL - MANOR LAKES

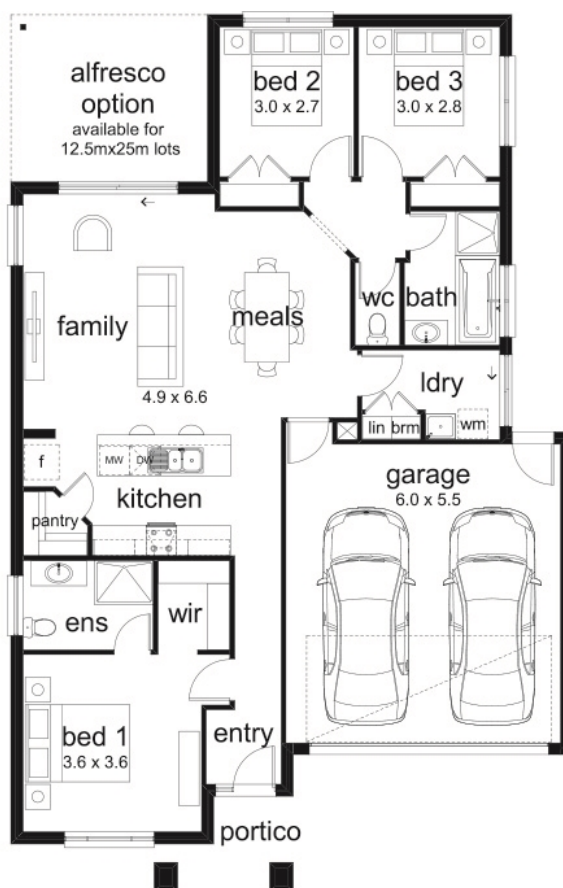
Lot 13534 Rosewater Street
Manor Lakes VIC 3024

3 cars 2 wc 2 cars 1

Jardean 17 Livia Façade
(Aspirations)

Home size: 16.91sq Land size: 400m²

- ✓ Aspirations Inclusions
- ✓ BAL 12.5 inclusions
- ✓ Fixed Site Costs
- ✓ Developer/Estate Covenant Requirements
- ✓ Sectional Garage Door
- ✓ Remote control to garage door
- ✓ Stainless Steel Appliances
- ✓ 900mm Technica appliance pack
- ✓ Gas ducted heating
- ✓ Floor Coverings
- ✓ Concrete paving to driveway and portico (up to 35m²)
- ✓ Designer front entry door
- ✓ Lockable internal access door from garage
- ✓ Overhead cupboards with bulkhead above to kitchen
- ✓ Designer mixer tapware throughout
- ✓ 20mm Caesarstone benchtops to kitchen



Go to dennisfamily.com.au or call
1800 DENNIS for more information.

Gurwinder Randhawa 0448 895 801
Reference HL0034617