

Lot Number
19632 / 19633

A SMART MOVE

Southampton Villa - Newport Facade



Artist Impression

A home built for you

The Southampton Villas are the first range within the Reside Collection and are a casual and relaxed style with classic weatherboard features and a calming colour palette. Featuring a spacious three bed, two bath design with either a single or double garage, a Southampton Villa is spacious and delivered complete, ready for you and your family.

- Fixed price – no extra costs
- No building approvals required
- Only 5% deposit and the balance upon completion – no progress payments
- \$10k FHOG for eligible first home buyers*
- Victorian Homebuyer Fund*
- Stamp duty savings for eligible owner occupiers*

Make an appointment to speak to the Manor Lakes sales team about building your dream home with the Reside Collection.



*Subject to State and Federal eligibility rules, see www.sro.vic.gov.au/first-home-owner and www.sro.vic.gov.au/homebuyer To find out if you qualify for stamp duty savings, please refer to www.sro.vic.gov.au/offtheplan for more information.

Southampton Villa

Newport Facade

Lot 19632

16 Bainbridge Road,
Manor Lakes 3024

3  | 2  | 2  Land 284m²

Room Dimensions: Family: 5.3 x 3.1m
 Dining: 5.9 x 3.1m
 Master Suite: 3.3 x 3.8m
 Bedroom #2: 3.1 x 3.7m
 Bedroom #3: 3.1 x 3.2m

Total Floor Area: 167.45m²

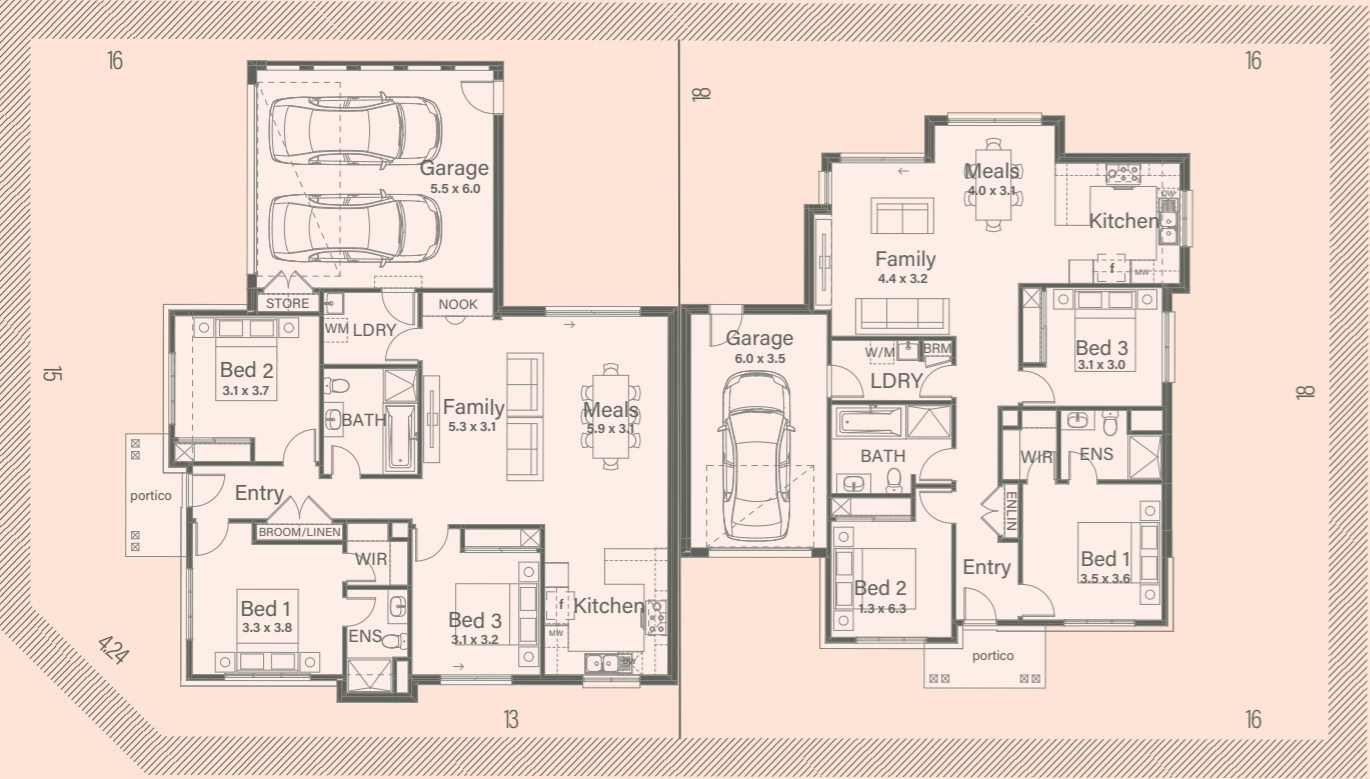
Lot 19633

3 Minoa Road,
Manor Lakes 3024

3  | 2  | 1  Land 288m²

Room Dimensions: Family: 4.4 x 3.2m
 Dining: 4.0 x 3.1m
 Master Suite: 3.5 x 3.6m
 Bedroom #2: 3.6 x 3.1m
 Bedroom #3: 3.1 x 3.0m

Total Floor Area: 145.35m²



Images, drawings and descriptions are for illustration only, are not to scale and may differ from final built form. © 2023. Except as permitted under the Copyright Act 1968 no material anywhere on this website or brochure may be copied reproduced altered or further disseminated in any form without prior written permission.

Lot 19632



Lot 19633



Beauty is in the detail

The Reside Collection possesses exceptional attention to detail and high-quality finishes throughout. A complete turnkey solution, your home will be ready for your family to move in and start living.



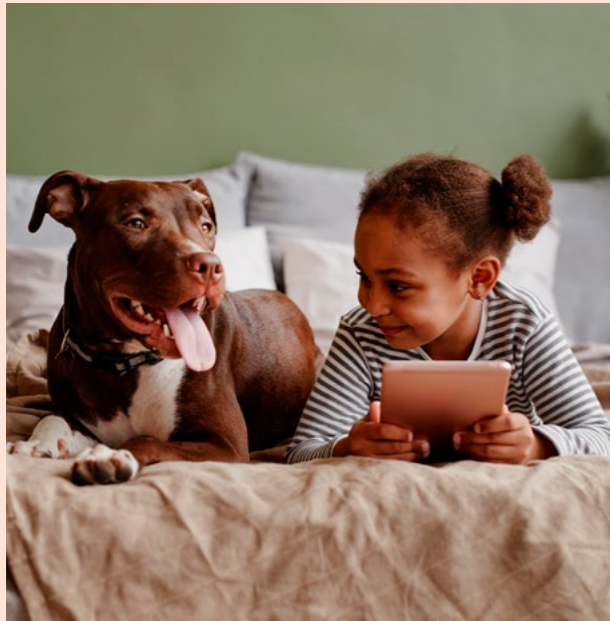
Warm Colour Scheme. Artist Impression.



Some of the premium inclusions to be found in the Reside Collection:

- Tiled kitchen splash back
- Stainless steel 900mm five burner cooktop
- Stainless steel 60cm electric oven
- Stainless steel dishwasher
- Engineered stone benchtop to kitchen, bathroom and ensuite
- 10kw Bonaire Optima ducted reverse cycle system heating and cooling
- Alarm package including 4 sensors, strobe, siren and keypad
- Landscaping to front and rear of house with fencing included
- Sectional garage door with remote
- Exposed aggregate driveway
- 2550mm ceiling height
- Independent 6 Star Energy Rating

And so much more!



What you'll get in your new home

Kitchen

- Engineered stone benchtop
- Stainless steel five burner gas cooktop
- Stainless steel electric oven
- Stainless steel finish canopy rangehood
- Stainless steel dishwasher

Ensuite and Bathroom

- Bath
- Shower base
- Engineered stone benchtop
- Semi-frameless polished silver shower screen
- Vitreous china vanity bowl or semi recessed bowl
- Fixed mirrors with polished edge
- Bright chrome double towel rails and toilet roll holder
- Toilet, fully concealed low slung pan with vitreous china dual flush

Tapware

- Single lever gooseneck chrome mixer tap with aerator to sink
- Mixer taps in chrome finish to basins, baths, showers, and laundry
- Shower rose
- Garden taps provided to front and rear yard

Storage

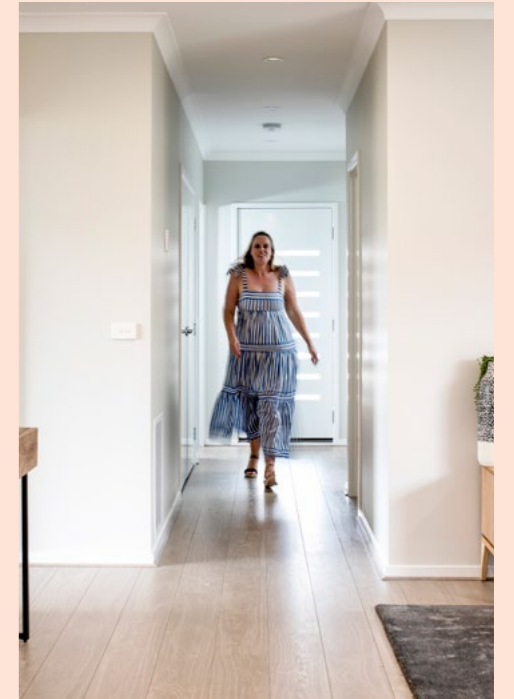
- All robes have shelf and hanging rail
- Linen cupboard with shelf
- Broom cupboard with shelf

Laundry

- 45 litre stainless steel tub with cabinet

Other

- 160 litre Solar Hot Water System and 6 star 24 litre integrated gas booster
- 10KW Bonaire Optima ducted reverse cycle heating and cooling system
- Mains power smoke alarms with battery backup
- Free to air TV point, pay TV point, 3 data points, and 1 telephone point ready for NBN connection
- Sectional garage door with remote
- Landscaping to front and rear, including letterbox and clothesline
- Exposed aggregate driveway
- Timber paling fencing to side and rear boundaries
- Independent 6 star energy rating



Cool colour scheme

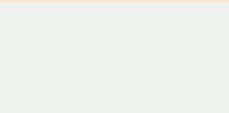
External



Walls (Render):
Haymes City Stone



Walls (Cladding):
Haymes Balance



Frames:
Haymes Greyology 1

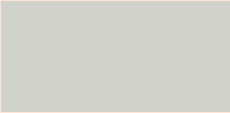


Garage Door:
Colourbond Monument

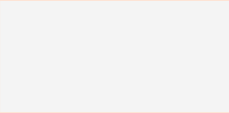


External Brick:
PGH Putty Smoky Silhouette

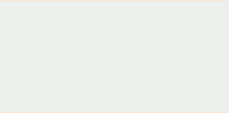
Internal General



Wall Colour:
Haymes Moon & Stars



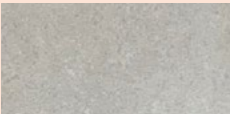
Ceiling Colour:
Haymes Dennis White



Trim Colour:
Haymes Greyology 1



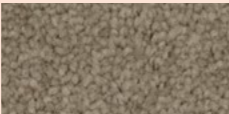
Switches & Power Points:
White



Wet Area Floor/Wall Tile:
Hynes Newport Latte Matt



Floor Laminate:
Brooklyn 105 Newtown



Carpet:
40 Hearthstone

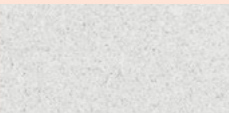


Roller Blinds:
Dusk Aram

Joinery



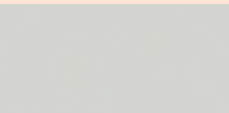
Kitchen Benchtop:
Caesarstone Urban



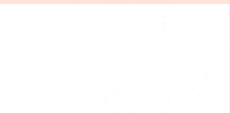
Bathroom Benchtop:
Caesarstone White Shimmer



Kitchen & Ensuite Cabinetry:
Chalk White



Bathroom Cabinetry:
Oyster Grey



Splashback:
Gloss White Listello

Appliances



Gas Cooktop:
900mm Technika
TGC9GLWFSS



Electric Oven:
60cm Technika
TO605TX



Rangehood:
Technika CHEM52C9CL-5



Dishwasher:
Technika Stainless Steel

The Village Masterplan

Lot Number 19632 / 19633



This brochure is not a contract and is not binding. Photos, maps, plans, drawings and descriptions are for illustration only, may include computer renders, are not to scale and may differ from final built forms. Actual lots, stages, facilities, amenities, infrastructure and their configuration are subject to statutory approval and may change without notice. All reasonable care has been taken to ensure accuracy however the information published may change from time to time to reflect changing circumstances, laws and regulations and without notice. Your contract of sale will set out all binding terms and relevant property information. Prospective buyers should make and rely on their own enquiries and seek independent legal and financial advice before entering into any binding obligations. To the full extent permitted by law all liability is expressly excluded whether in negligence or otherwise, for any loss or damage in respect of, or arising from, reliance on this document. DFC (Project Management) Pty Ltd ABN 83 161 448 139 is project manager for the Manor Lakes Estate. The Manor Lakes logo is a registered trade mark used under licence © 2023, Dennis Family Homes Pty Ltd ACN 056254249 is a registered building practitioner. Builder licence number CDB-U 49195 (VIC) and 173511C (NSW).



Sales Centre

218 Manor Lakes Boulevard, Manor Lakes

1300 334 524

info@manorlakes.com.au

manorlakes.com.au