



BURNLEY



FIXED PRICE

\$589,000LOT 20213 ARDSLEY STREET, MANOR LAKES
MANOR LAKESHOME SIZE 16SQ
LAND SIZE 221m²

Illustrative purposes only. Some items depicted may not be included such as Kitchen Window

SOHO LIVING TURNKEY INCLUSIONS

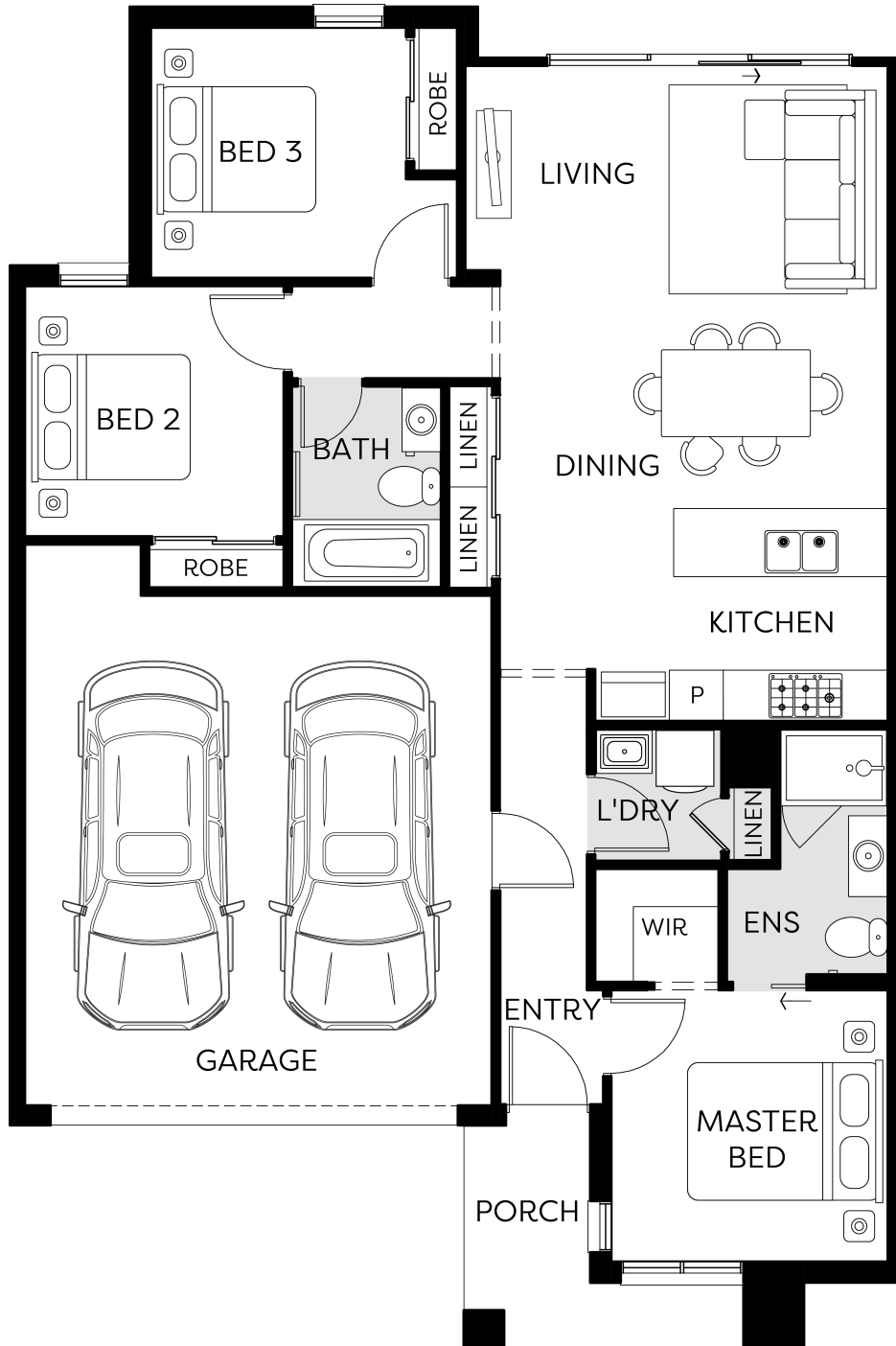
- Architectural façade (indicated façade is applied to standard floorplan)
- 2590mm ceiling heights to ground floor
- 20mm engineered stone benchtops including waterfalls
- 20mm engineered stone benchtop to ensuite and bathroom
- SMEG Kitchen appliances including dishwasher
- Coloured concrete driveway and front path
- Timber laminate flooring to living areas
- Quality carpet to bedrooms
- Tiled shower bases
- Colorbond sectional garage door with dual remotes
- Sliding Robe doors
- LED downlights
- Landscaping to front and rear including letterbox, clothesline and fencing
- Developer estate guidelines

\$589,000

LOT 20213 ARDSLEY STREET, MANOR LAKES

MANOR LAKES

Porch dimensions as per render



Whilst care has been taken in the preparation of this flyer, the particulars are not to be construed as containing any representation of the facts upon which any interested party is entitled to rely. This flyer is intended to provide general information only and does not constitute an offer to supply. All photographs, plans, maps and drawings are illustrative only and may not be to scale. Lot layout, lot size dimensions, easements, landscape treatments and final road layout are subject to change and conditional on authority approval. External colors are pre determined. All interested parties should make their own enquires. Information contained is correct at the time of printing. The builder is entitled to make an extra charge for an amount not already provided for in the contract if the need for the additional amount could not have been reasonably foreseen had the builder obtained the Foundations data. * Source: Victorian Planning Authority CDB-U 50036